

Geo-Analytics and Machine Learning for Infrastructure

Dr. Kelly Rose

Technical Director, Science-based Ai/MI Institute (SAMI), NETL

Dr. Kelly Rose

Technical Director, Science-based Ai/MI Institute (SAMI), NETL



Kelly Rose, PhD, is a geo-data scientist with over 20 years of service and research experience at the U.S. Department of Energy's National Energy Technology Laboratory (NETL). She is also the Technical Director for NETL's Science-based Ai/MI Institute ([SAMI](#)). Her research focuses on developing novel science-based, data-driven methods and models for addressing energy and environmental challenges, including NETL's award-winning Energy Data eXchange® ([EDX](#)) ecosystem. Rose leads collaborative teams to deliver impactful computational data science resources and models in reusable, scalable, and reproducible formats.

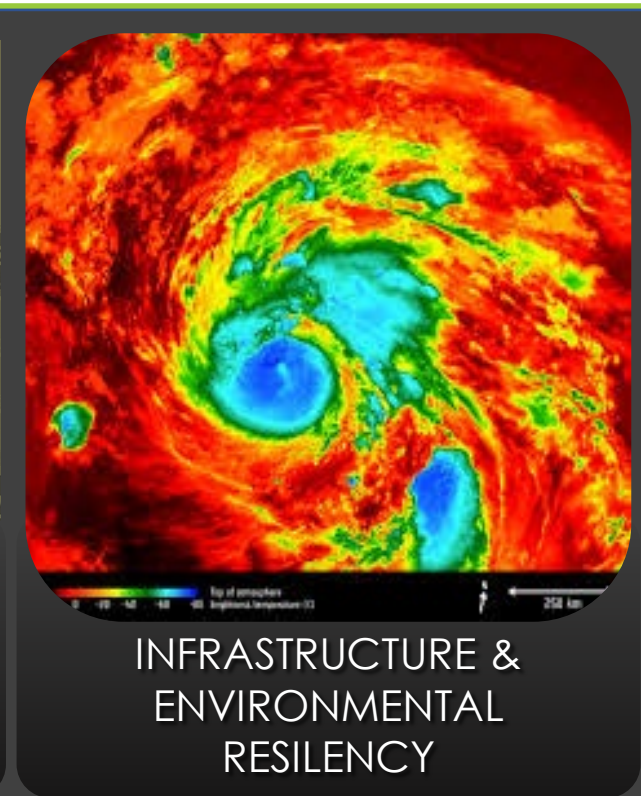
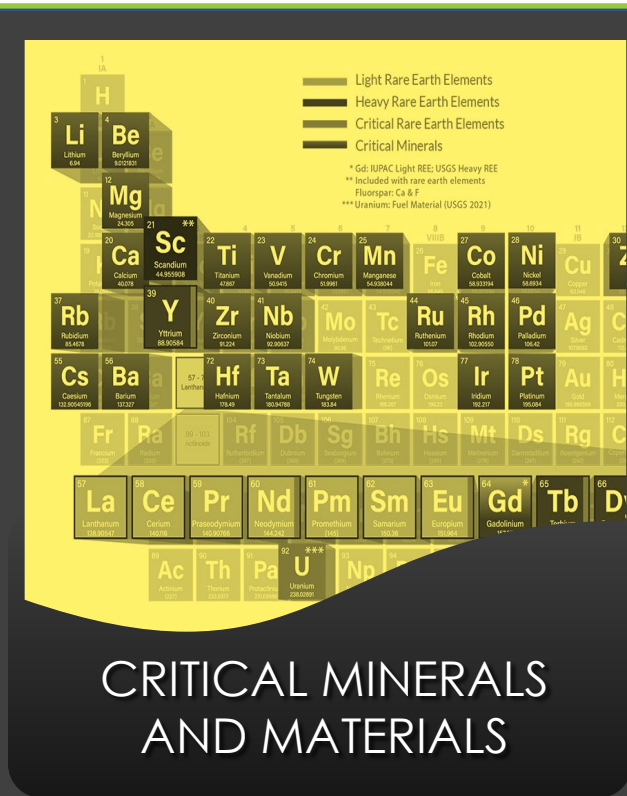
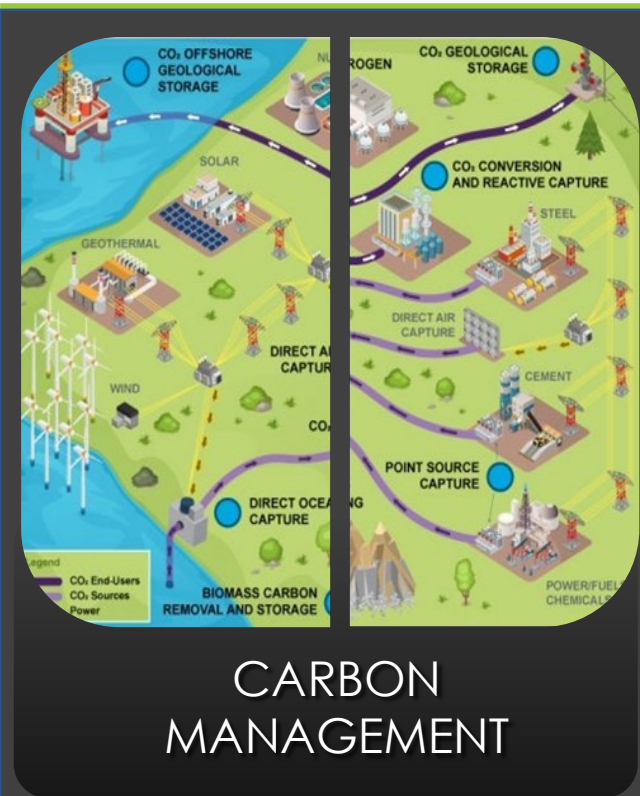
Her work has been applied to many scientific and societal domains including Earth science, geoinformatics, research data management and virtualization, climate and metocean, oil spill prevention, mineral and groundwater resources, geohazards, social and environmental justice, materials innovation, infrastructure resiliency, smart cities, and smart systems. She is coauthor on more than 100 public datasets, models, tools, journal publications, and technical studies. Rose has also mentored more than fifty STEM research interns and fellows and supports additional STEM outreach activities. She holds degrees from Denison University (B.S), Virginia Tech (M.S.), and Oregon State University (PhD).

Geo-data Science and Machine Learning for Infrastructure

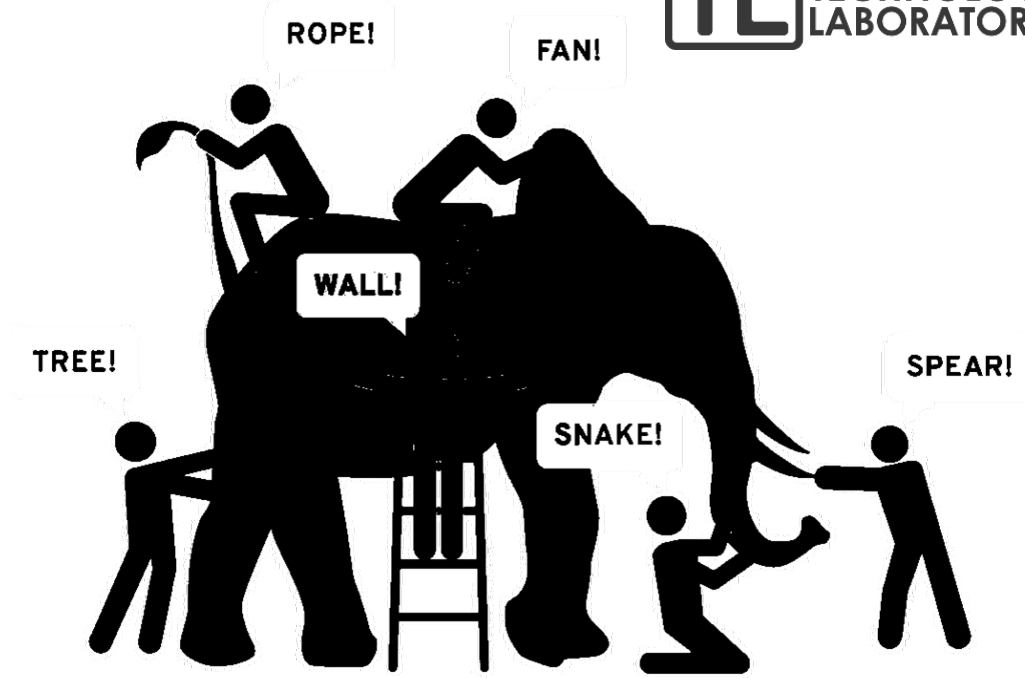
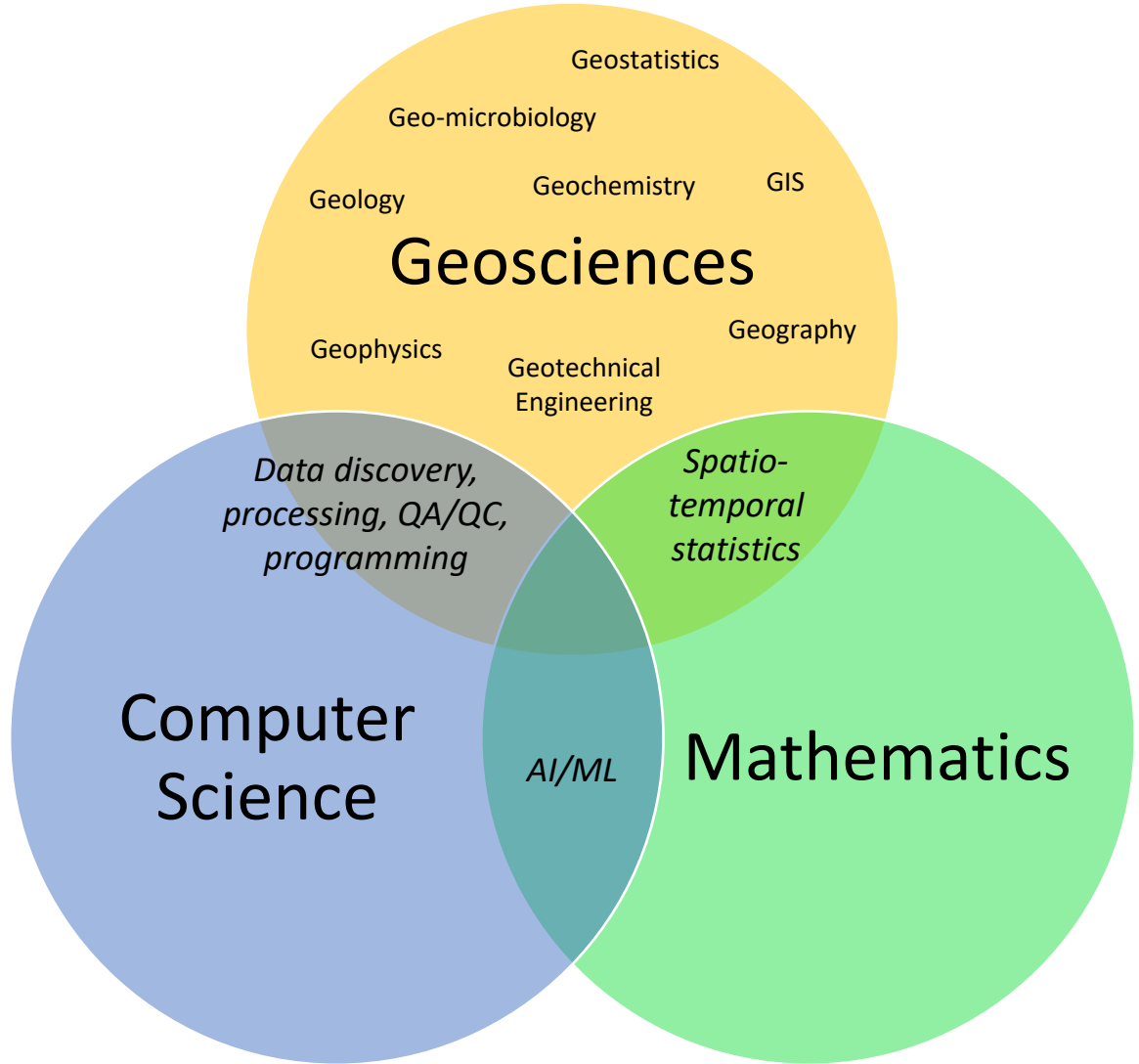
Innovating science-based geo-computational solutions for stakeholder needs



Kelly Rose, Technical Director, NETL's Science-based Ai/ML Institute (SAMI)



What is geo-data science?

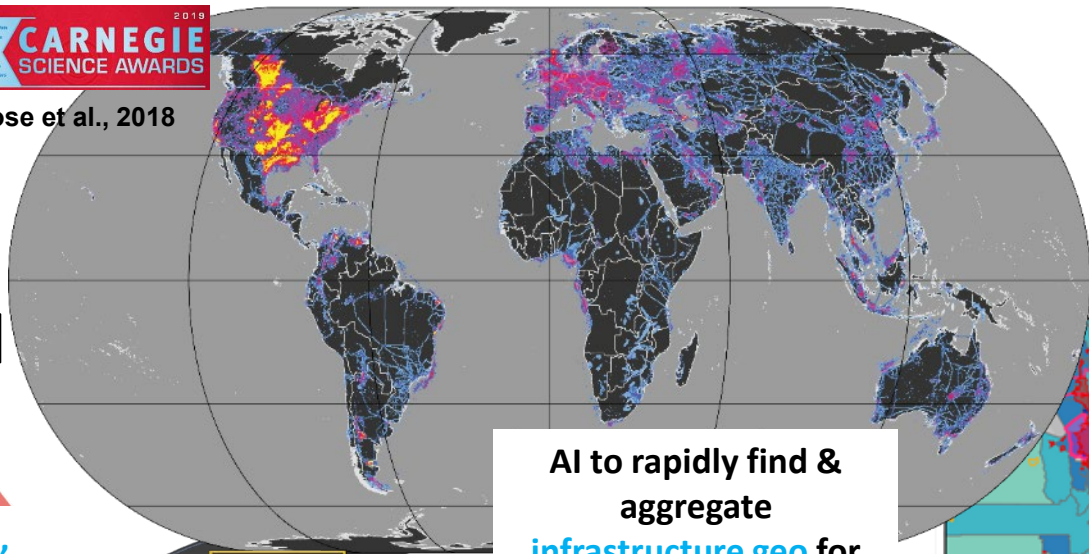




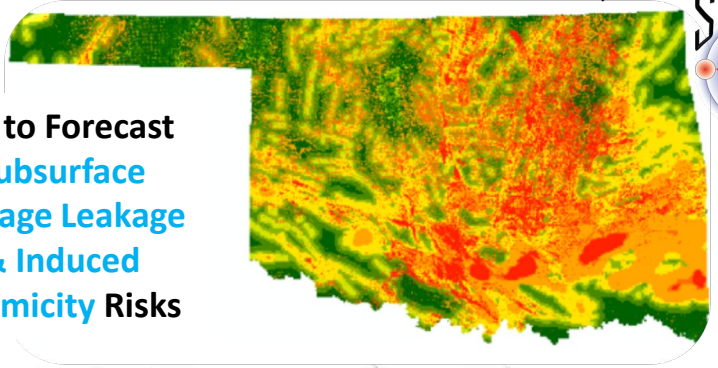
Addressing energy, societal & environmental needs



Rose et al., 2018



ML to Forecast Subsurface Storage Leakage & Induced Seismicity Risks



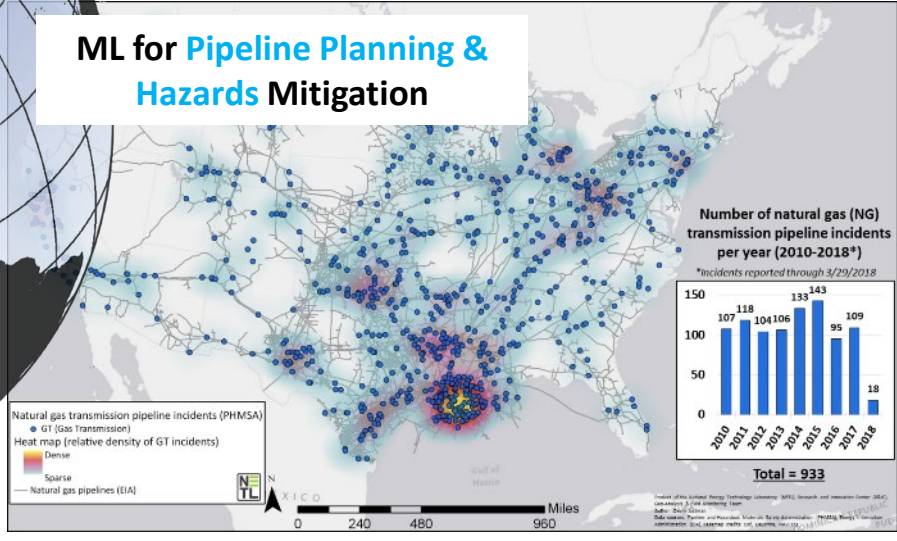
AI to rapidly find & aggregate infrastructure geo for CH4 emissions mitigation and orphan well predictions

Data science & ML to support energy transitions and inform energy, social & environmental justice activities

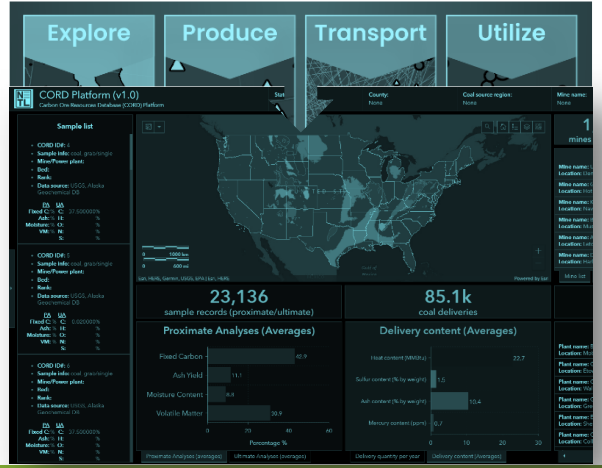
AI & geo-data science for risk, resource & resiliency analyses



ML for Pipeline Planning & Hazards Mitigation



Big data & digitalization to support REE-CM supply chain & manufacturing

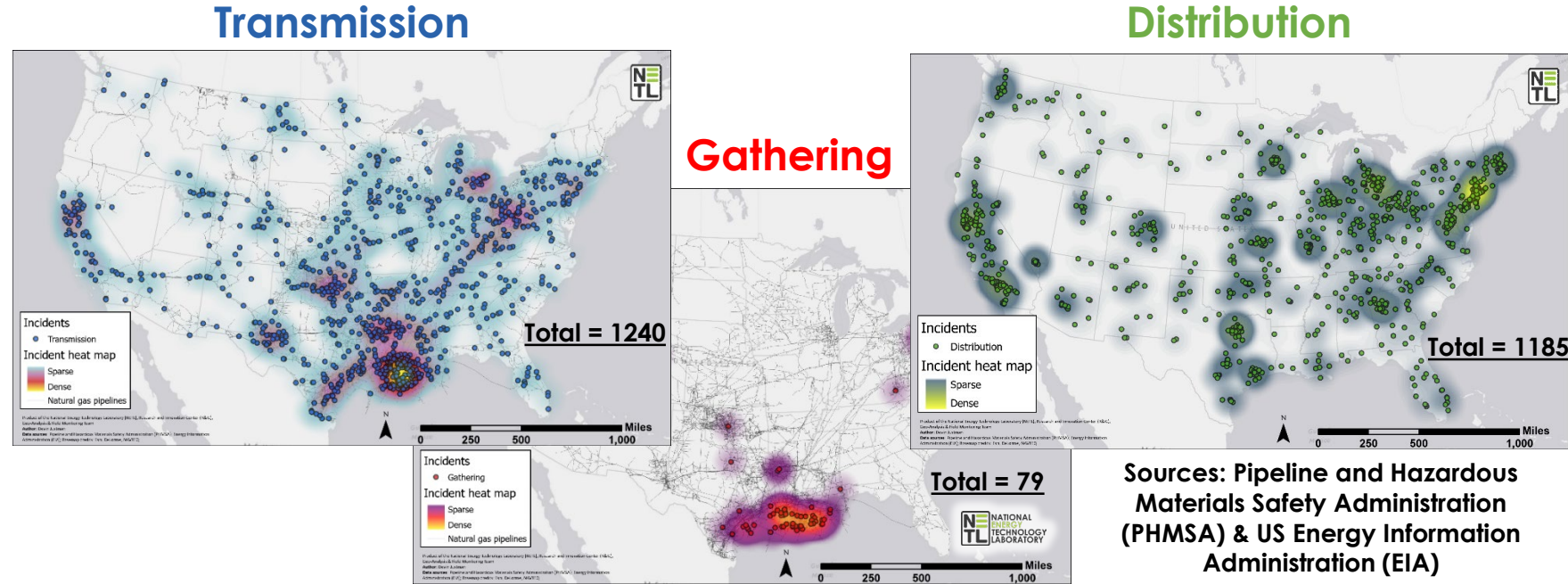


Geospatial Optimization for Pipeline Sensor Deployment

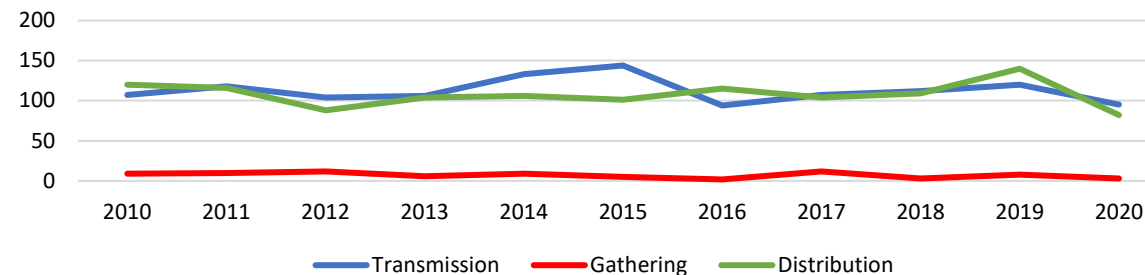
Identifying spatio-temporal trends associated with internal & external risks

What is the **need**?

- **Predict & prevent**
 - 200 incidents/year
 - >2.5 million miles
- **~1/12,500 chance** of picking the right mile of pipeline to invest resources
- Susceptible to a **wide range of risks**
- Need to **optimize sensor placement**



of incidents by system per year



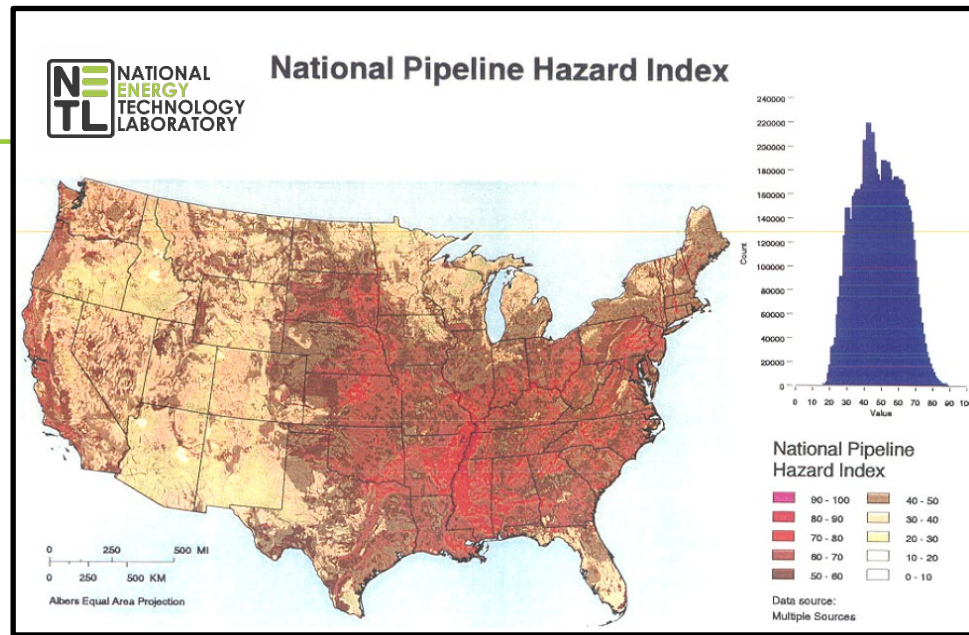
Approach & Benefits

Explored a **variety of geospatial analytics** to assess **pipeline integrity & failure risk**

Values Delivered

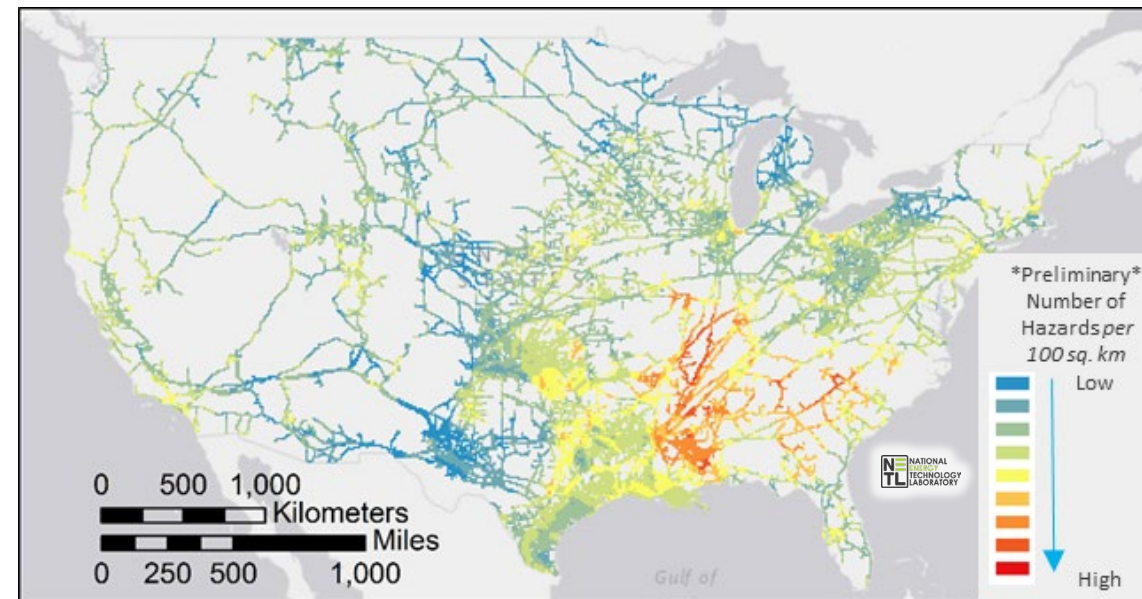
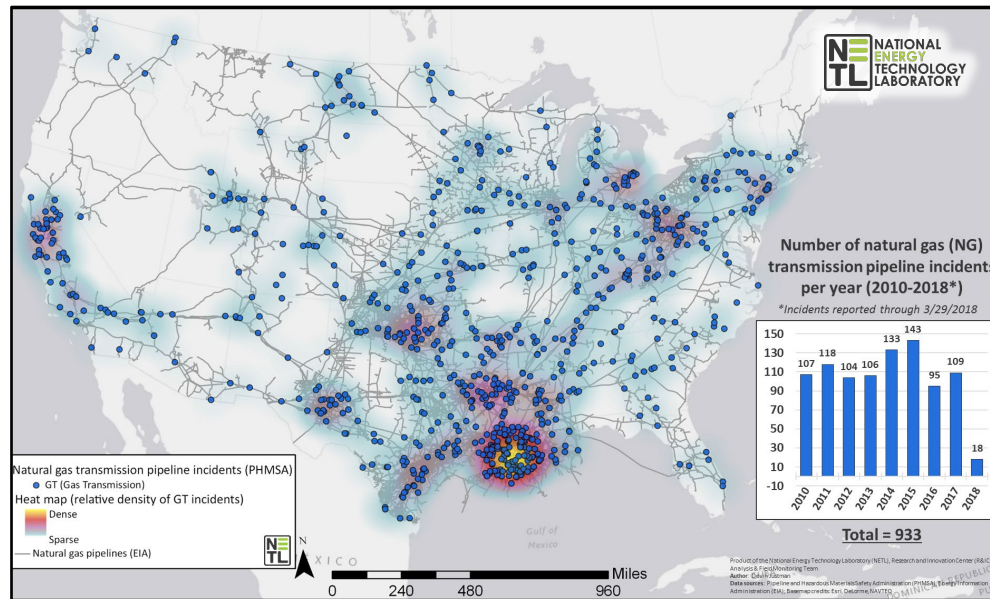
- Identified **priority areas for monitoring, maintenance, and improvements**
- Optimized placement of **advanced sensing & monitoring tools**

Opportunities for integration of sensing data, streaming data, and use for pipelines beyond NGI



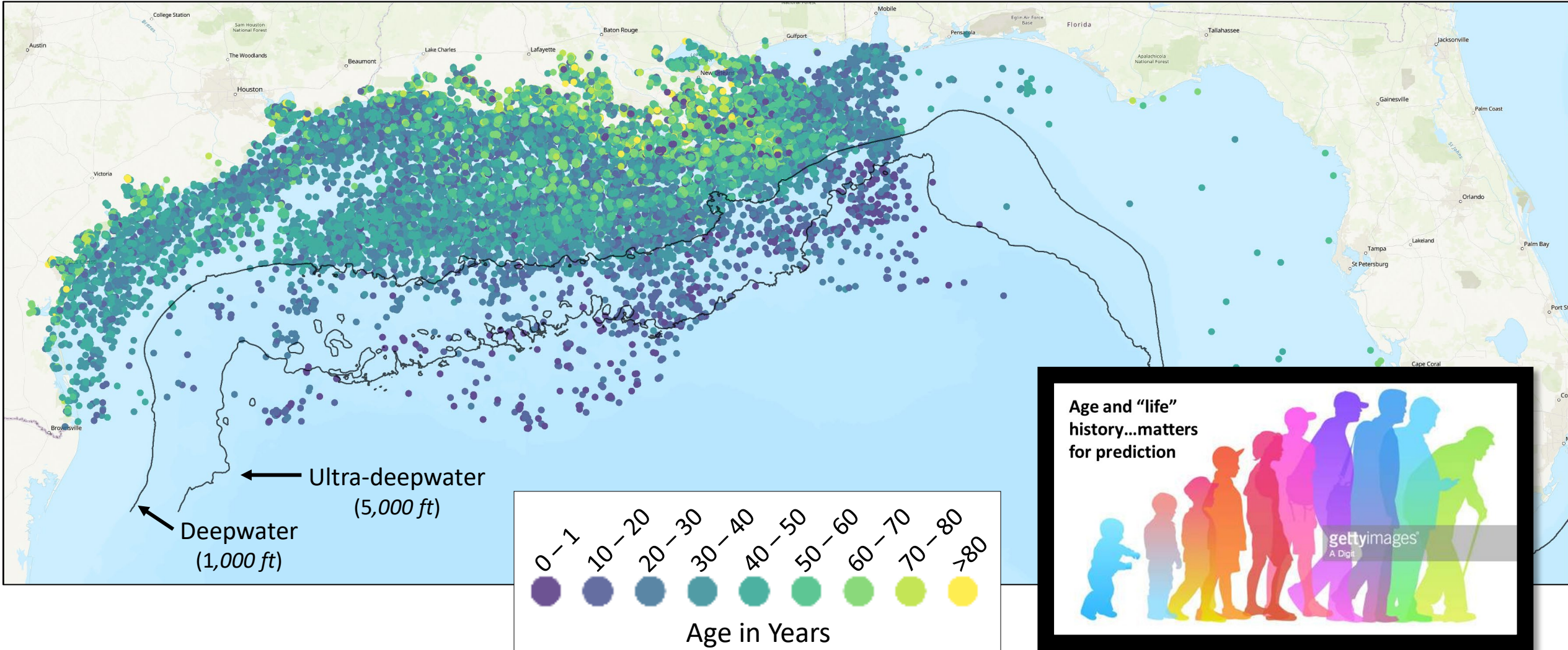
Updated risk factors based on FEMA and DOT 1996 study

National Pipeline Risk Index based on natural disasters

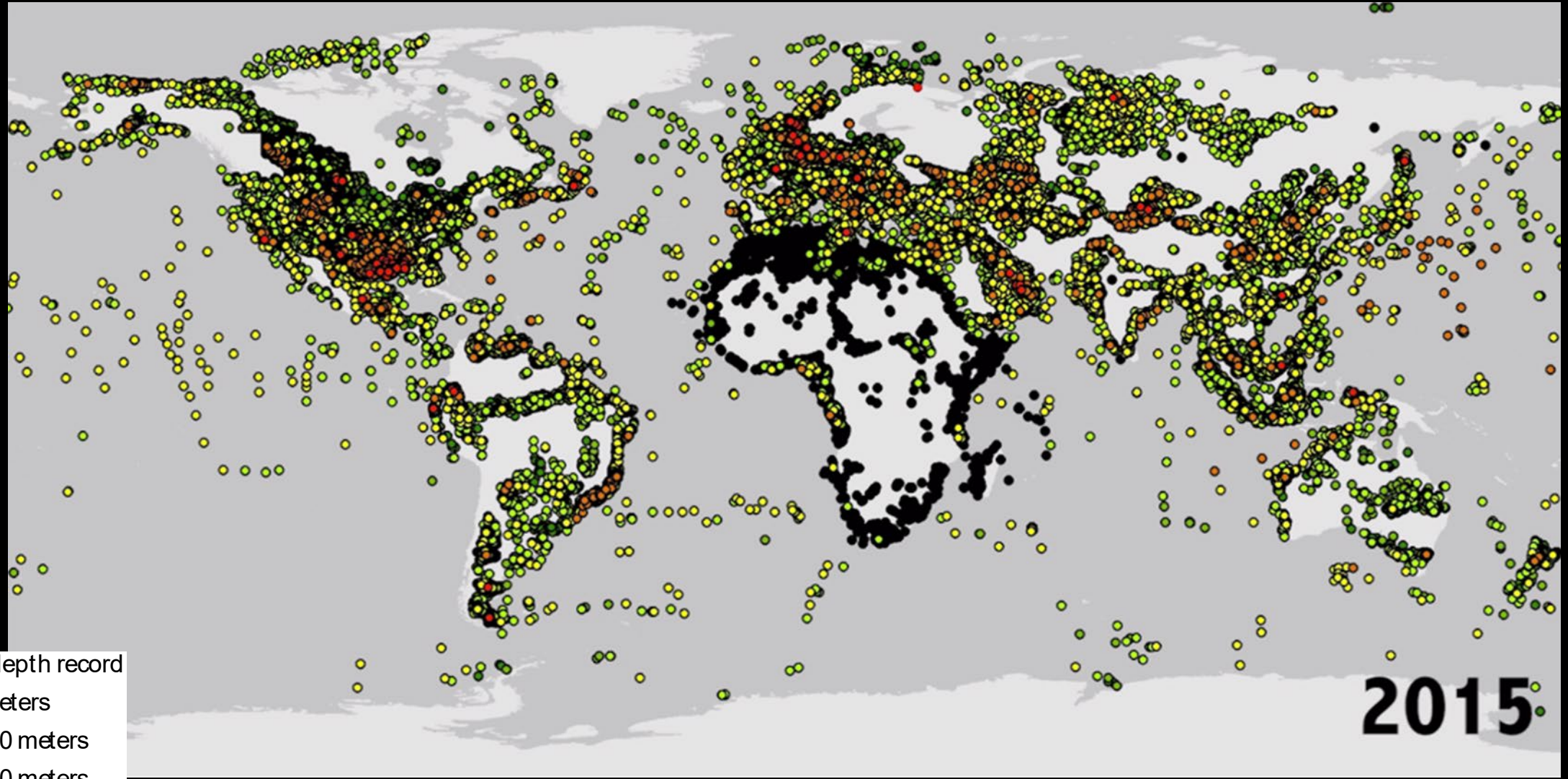


Assessing Well Integrity – ex. Gulf of Mexico

Ages of wells comparing today (August 1, 2022) to spud date



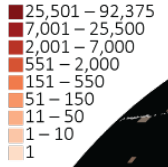
Data Aggregation & Analytics - 150 years of Global Deep Wells



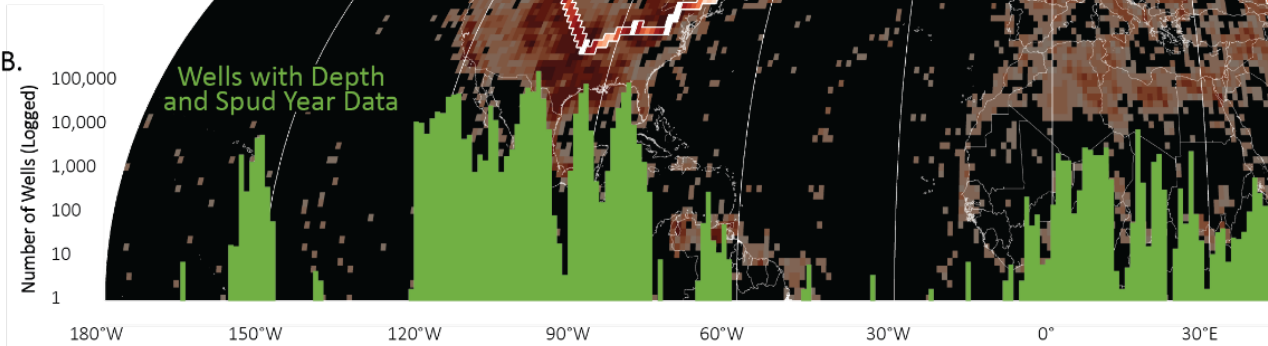
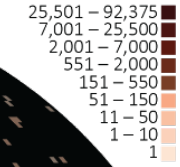
- Rose, 2016
- No total depth record
 - 1-1000 meters
 - 1001-2000 meters
 - 2001-4000 meters
 - 4001-6000 meters
 - 6001-8000 meters
 - >8000 meters

2015

A. Cross-Section Well Density by Degree Area

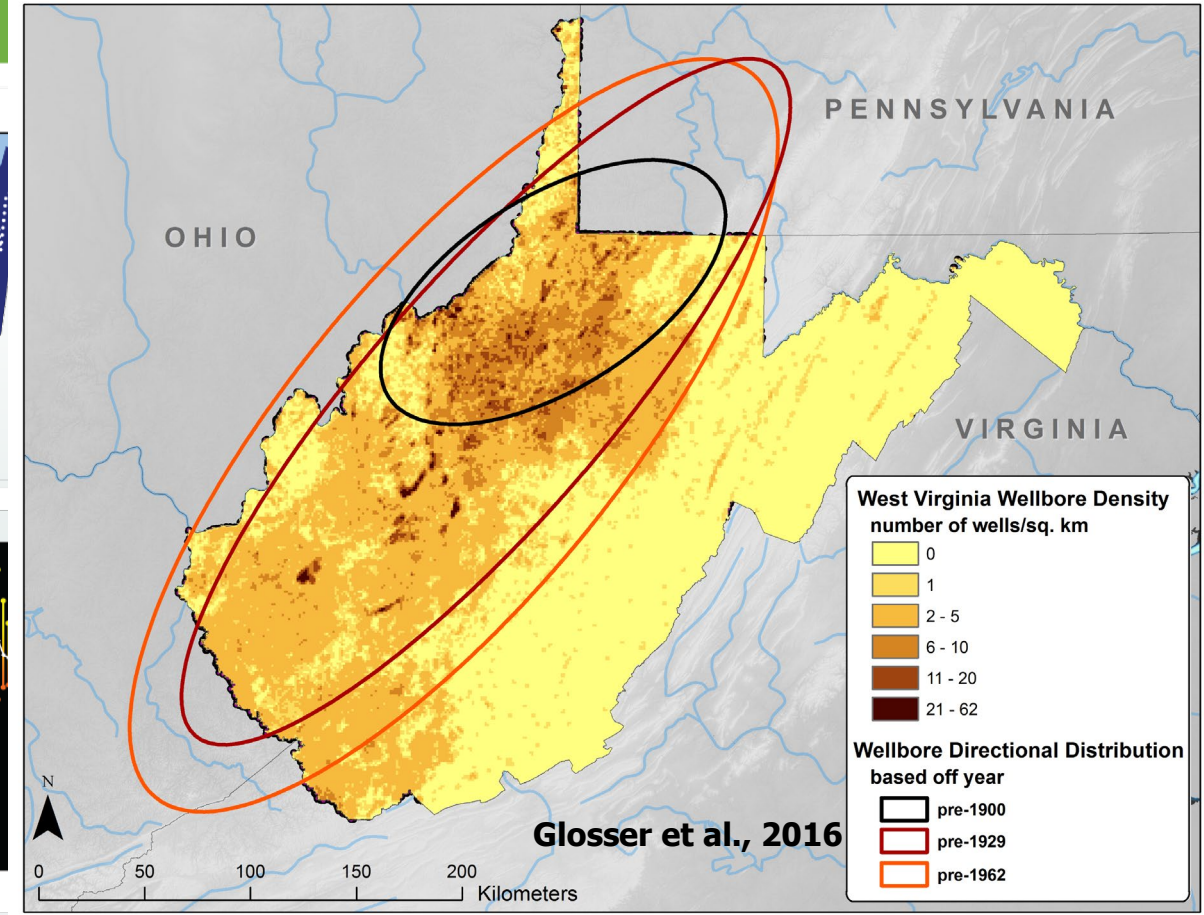
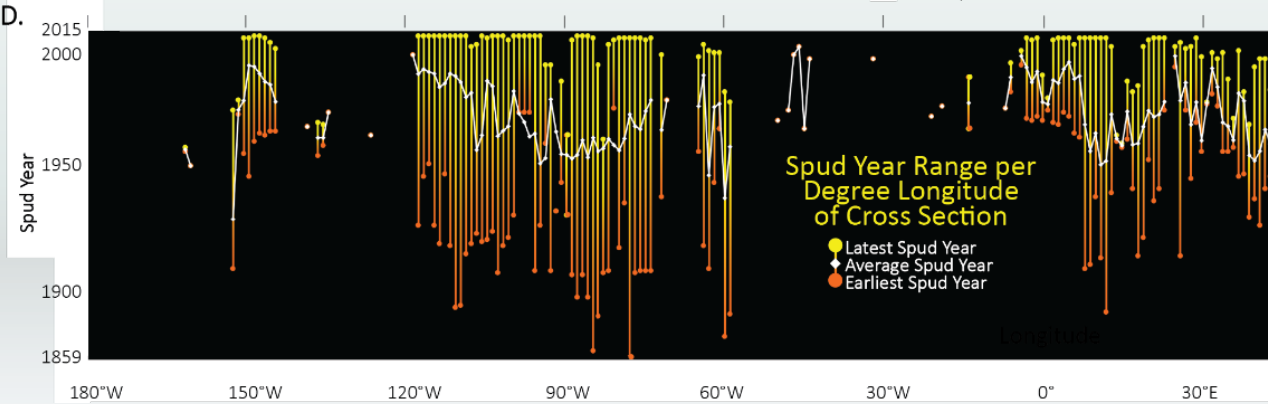
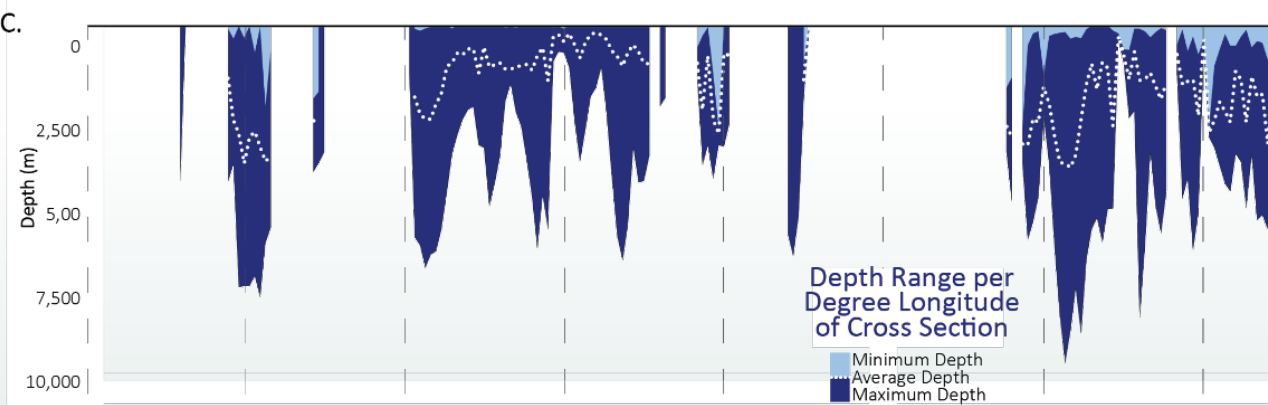


Map Well Density by Degree Area



Rose, 2016 & Bauer et al., 2021

Total density of wells per 1-degree cell as of 2015

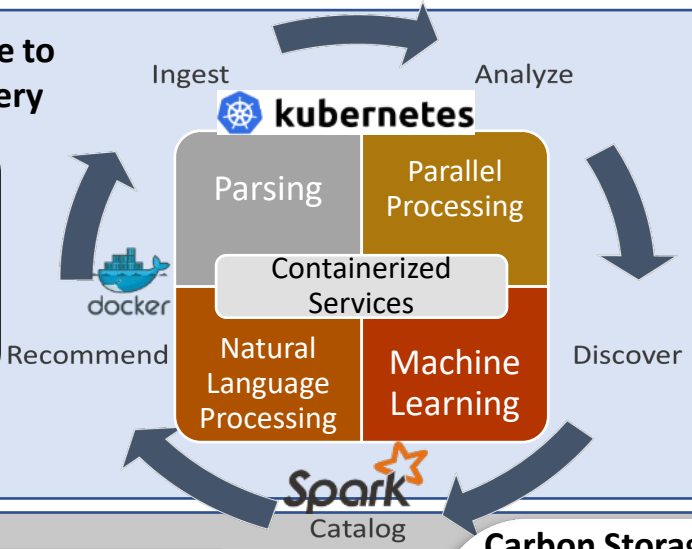


Digitalization, data management, & AI-informed data discovery

AI informed approach

Challenge: data infrastructure to AI/ML enhanced data discovery

Employing AI/ML tools to find relevant data resources



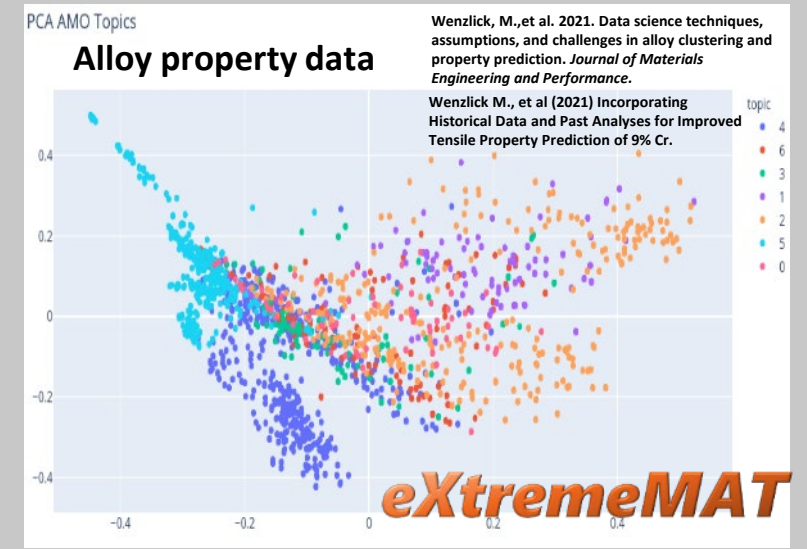
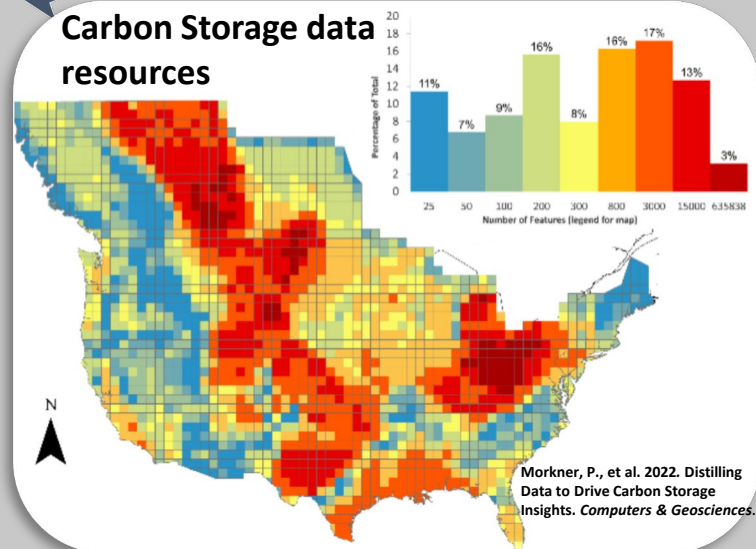
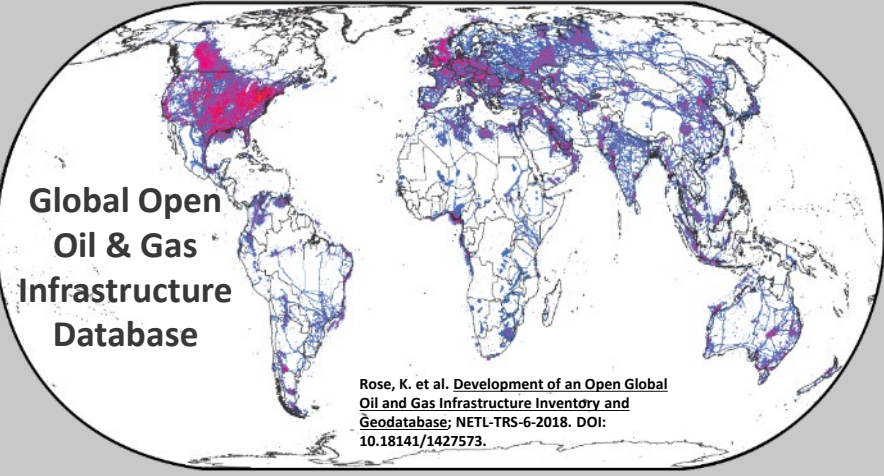
SmartSearch leverages ML+NLP to:

- 1) Analyzing content you like
- 2) Finding new content via www, local, enterprise data stores
- 3) Telling you how relevant the new data is to what you like

Opportunity:

Infinitely scalable to return text, graphical, tabular, image, html, spatial, etc
Driving next-generation of geo-data science R&D

Example applications to date



A big data, multiple AI/ML and advanced modeling framework

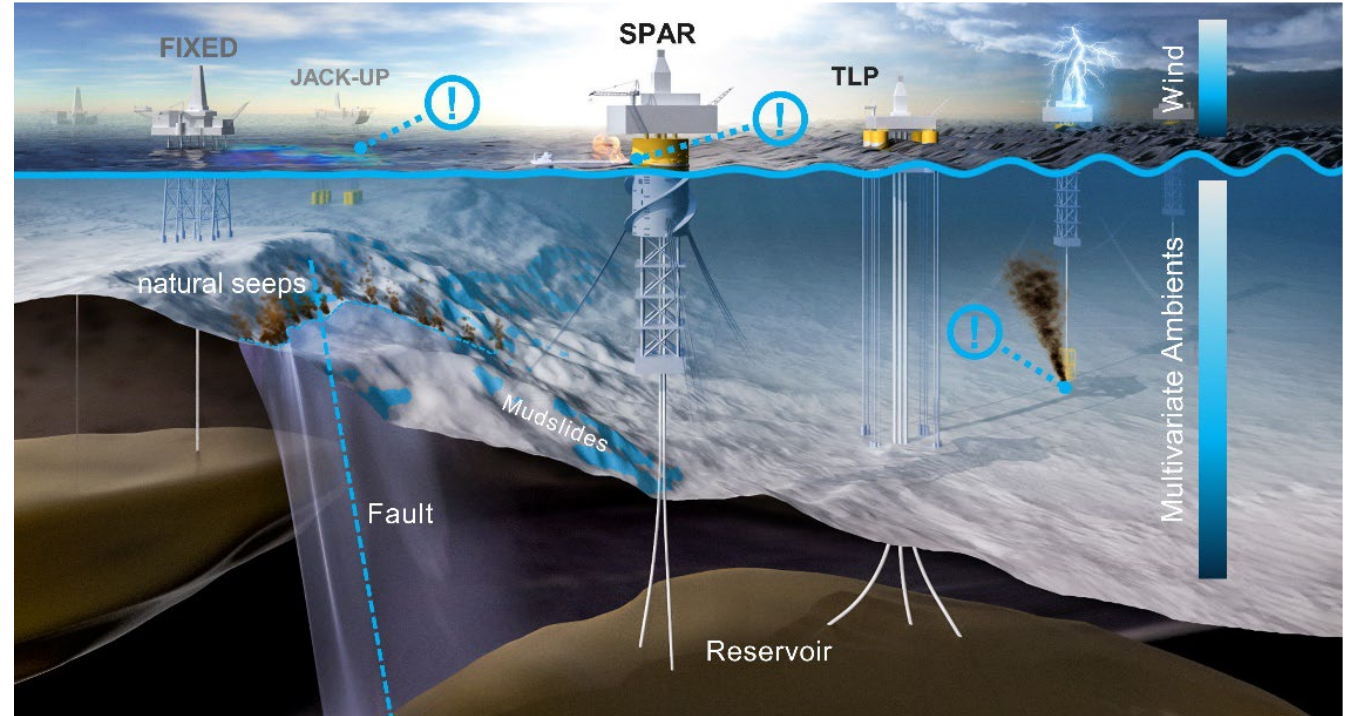
Assess the **current state** of **FECM infrastructure** & **risks** associated with the **extended use** or **repurposing** of **wells, platforms, & pipelines**

- Offshore operations can be hazardous
 - Environment
 - Changing climate
 - Operational wear-and-tear
- Infrastructure is aging



Dyer et al., 2021

- Published method & applications of the **AIIM framework** as applied to **platforms**
- Currently expanding **infrastructure assessments & analytical techniques**

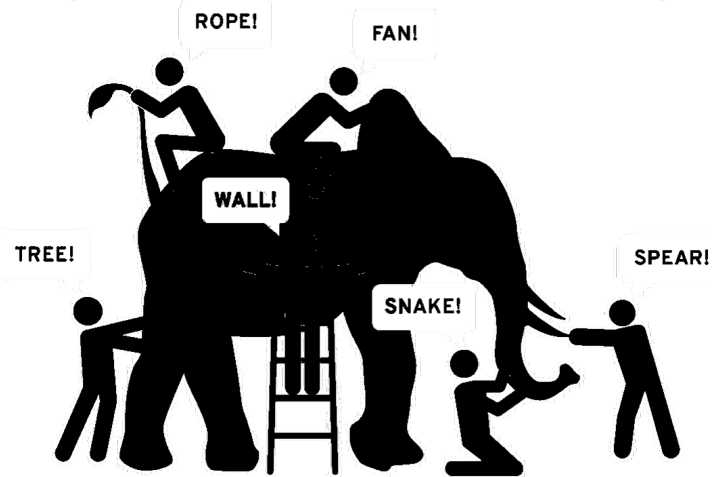


Values Delivered

- Identify infrastructure assets and liabilities
- Provide critical insights for safe reuse/repurposing strategies
- Inform operational and environmental risk prevention

Using the Whole to Inform the Local

Accounting for a fuller natural-engineered system

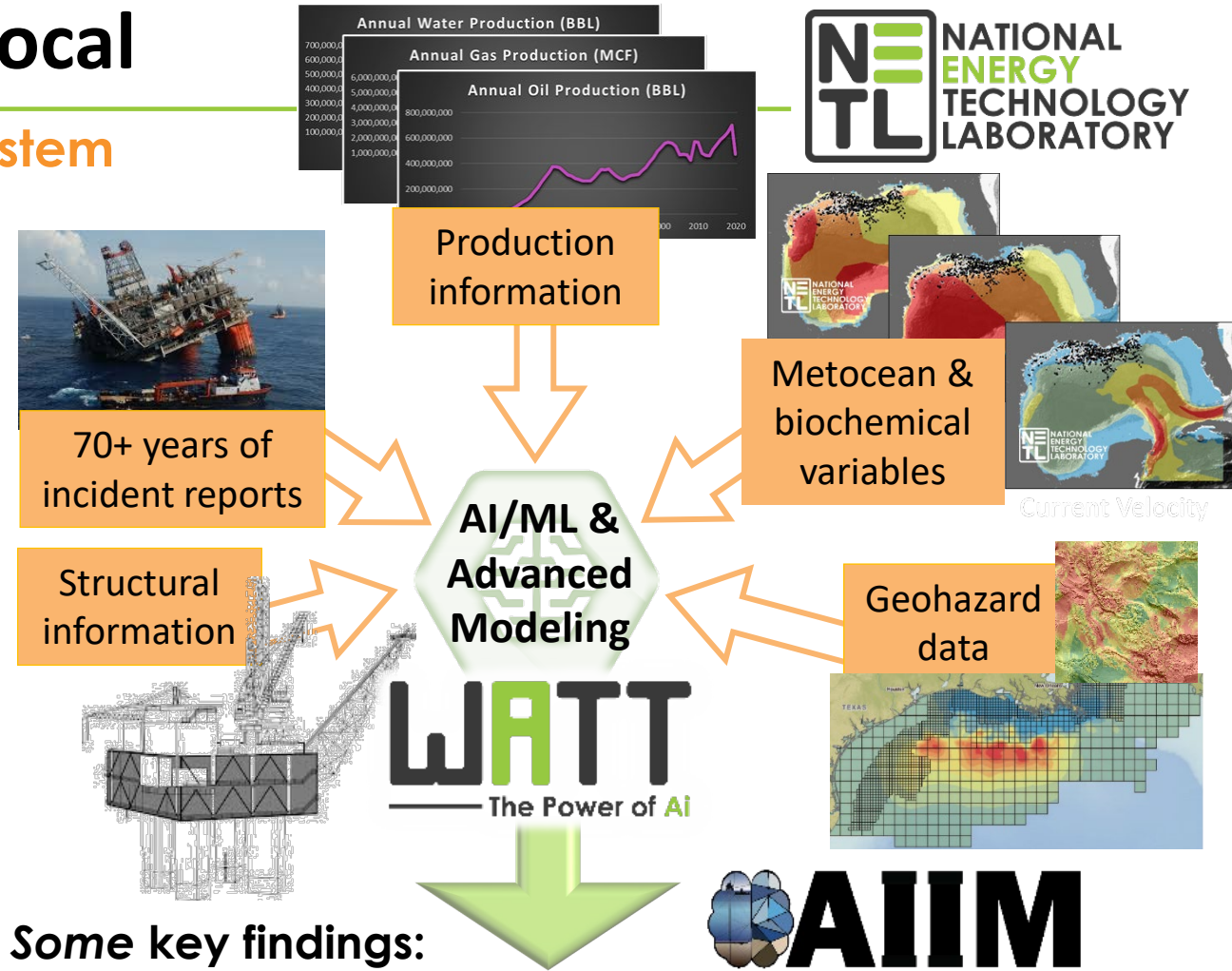


Multiple AI/ML Models (Dyer et al., 2022)

- Gradient Boosted Decision Trees (2 models)
- Artificial Neural Network (2 models)
- Bayesian Network

Advanced Analytics

- Geographically Weighted Regression (Nelson et al., 2021)
- Causality / Time series Analytics



Some key findings:

Multiple ML models capable of predicting removal age <3 years	Identified significant connections among biochemical variables & incidents	Corroborated results with news & reports
---	---	---

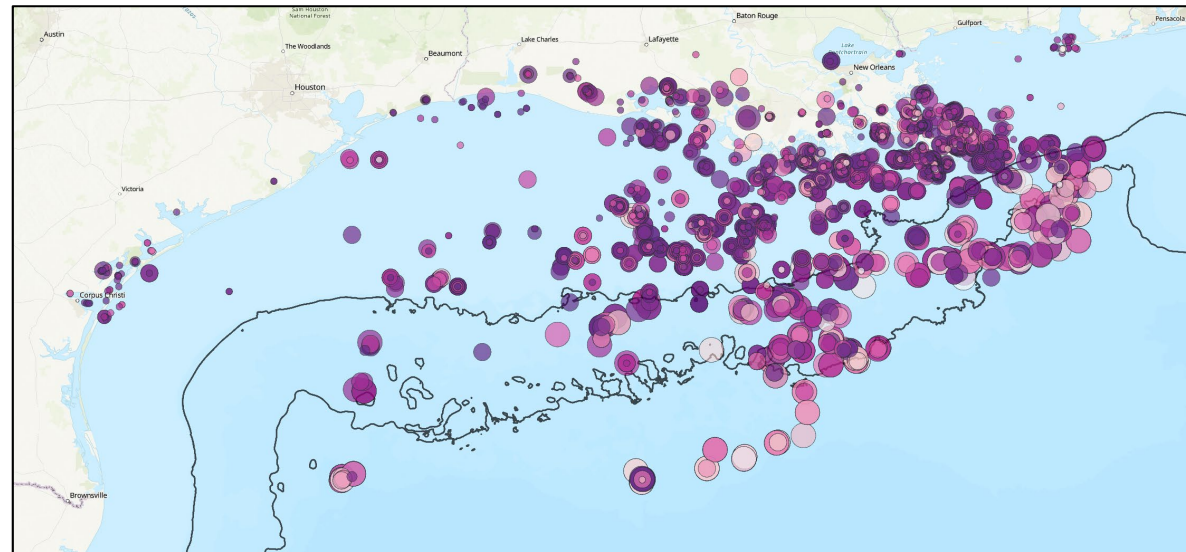
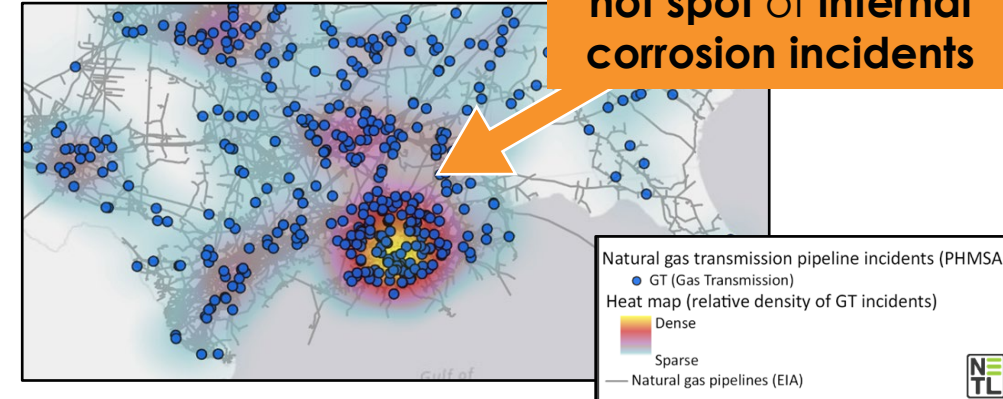
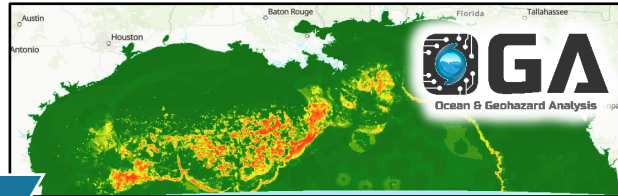
Expanding to Pipeline & Well Infrastructure

Utilizing past research for today's insights & analytics

- Leveraging data & insights from **national pipeline R&D sensor placement**
- Compiled & cleaned **>30 years reported pipeline incidents**
- Processing data for **>110k wells** in federal & state waters

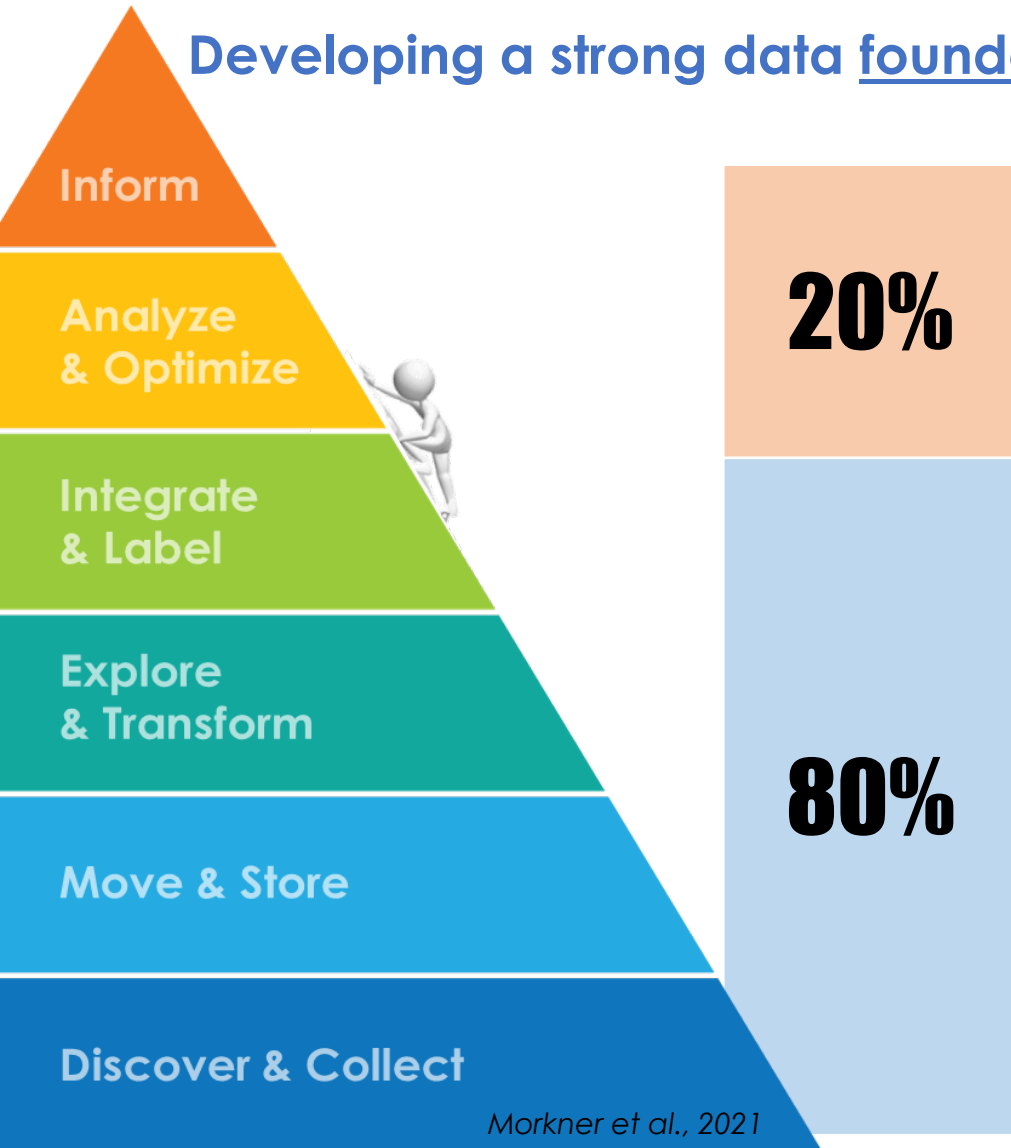
Adaptations to AIIM

- Extracting **at-depth** metocean variables
- Integrating **geohazard risk assessments**
- Evaluating **production life** and **status** of wells
 - Production timelines
 - Stats per field or area of interest
 - Amount produced or what was expected at end of life



Data are the *Energy* for Analysis & Inquiry

Developing a strong data foundation is key to any program/project's success



Morkner et al., 2021



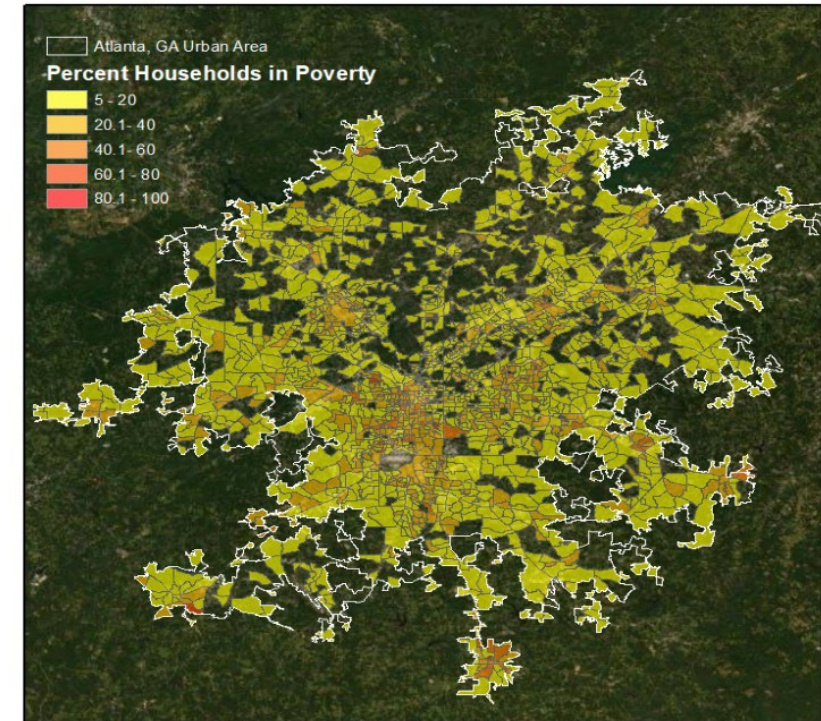
EDX has been used by other DOE Programs to reduce this data access barrier/overhead

Presently data-driven teams spend ~80% of their time addressing the bottom components of the “data pyramid”

Crowdflower 2016

High Demand for EESJ Data & Information

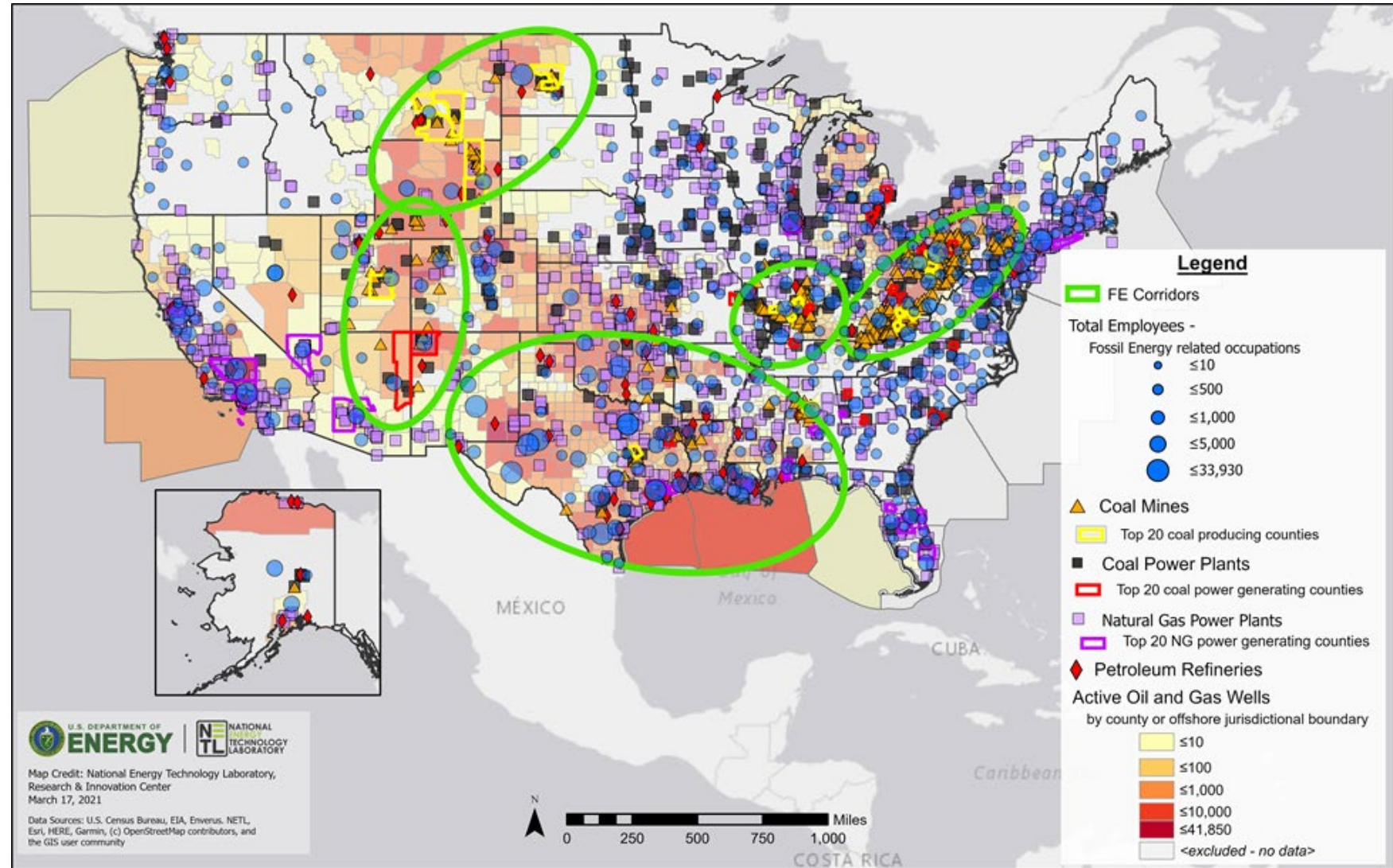
- Unprecedented opportunities for energy RDD&D
- **Energy transition and diversification** is ongoing and data-driven
- Spurred by initiatives like Justice40
- All rely on common baseline information that can help stakeholders understand and assess key energy, environmental & social burdens in relation to their activities and broader needs
- Most are strongly focused on energy infrastructure, existing & future opportunities



40% of the overall benefits of certain Federal investments—including investments in **clean energy** and **energy efficiency**; clean transit; affordable and sustainable housing; training and workforce development; the remediation and reduction of legacy pollution; and the development of clean water infrastructure—must flow to **disadvantaged communities**. (Justice40 Initiative (EO 14008, Section 223))

Value for Energy, Environmental & Social Justice (EESJ)

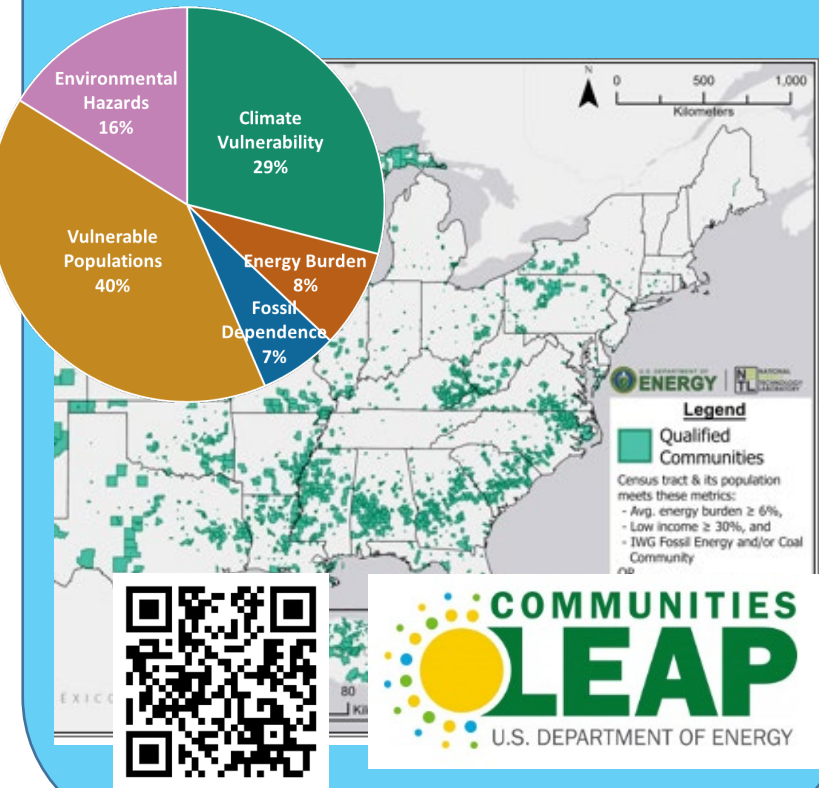
- Requires a wide range of data & information,
- At multiple spatial & temporal resolutions
- To address needs, what do you want to explore? What questions you want to evaluate?
- Role & use of these data require authoritative resources to ensure explainability & usability



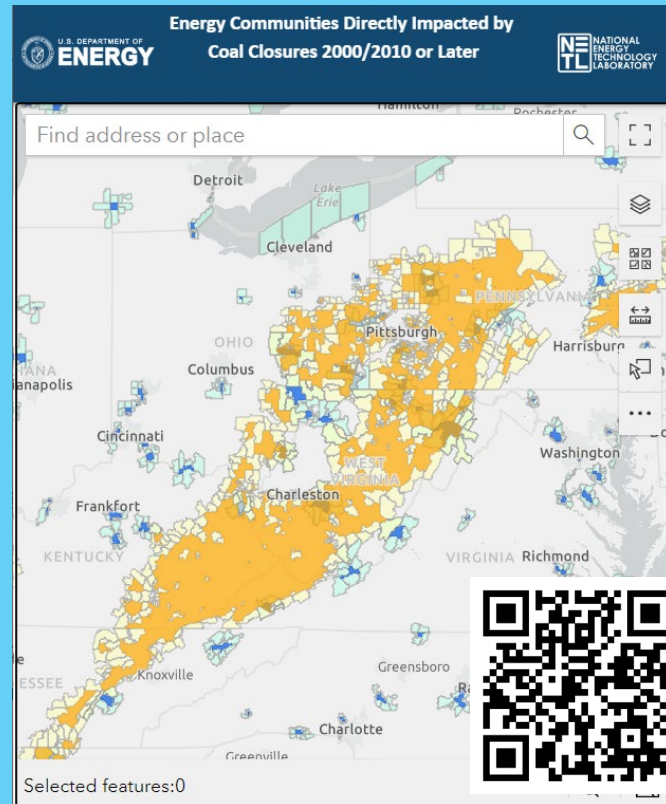
NETL's Geo-Data Science is Supporting on-going EESJ Efforts



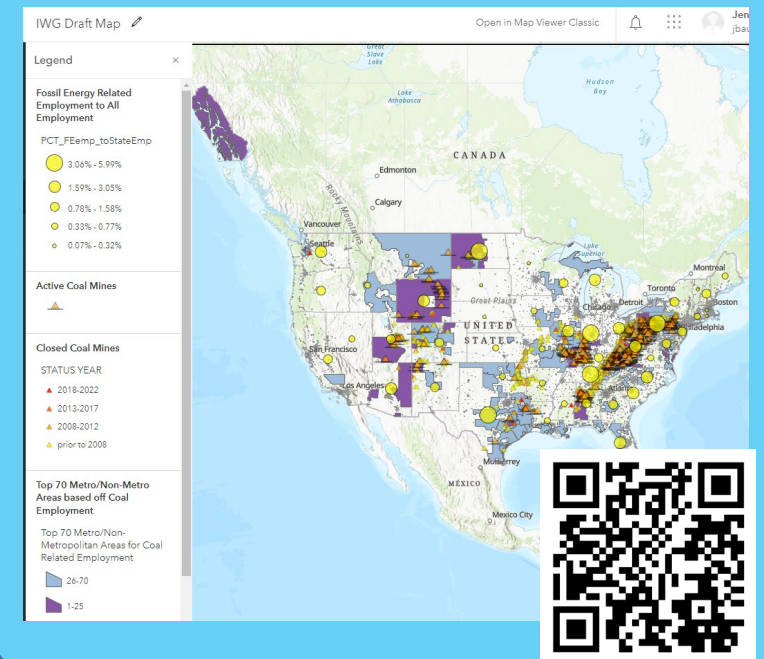
Justice40 Initiative & Communities LEAP Pilot



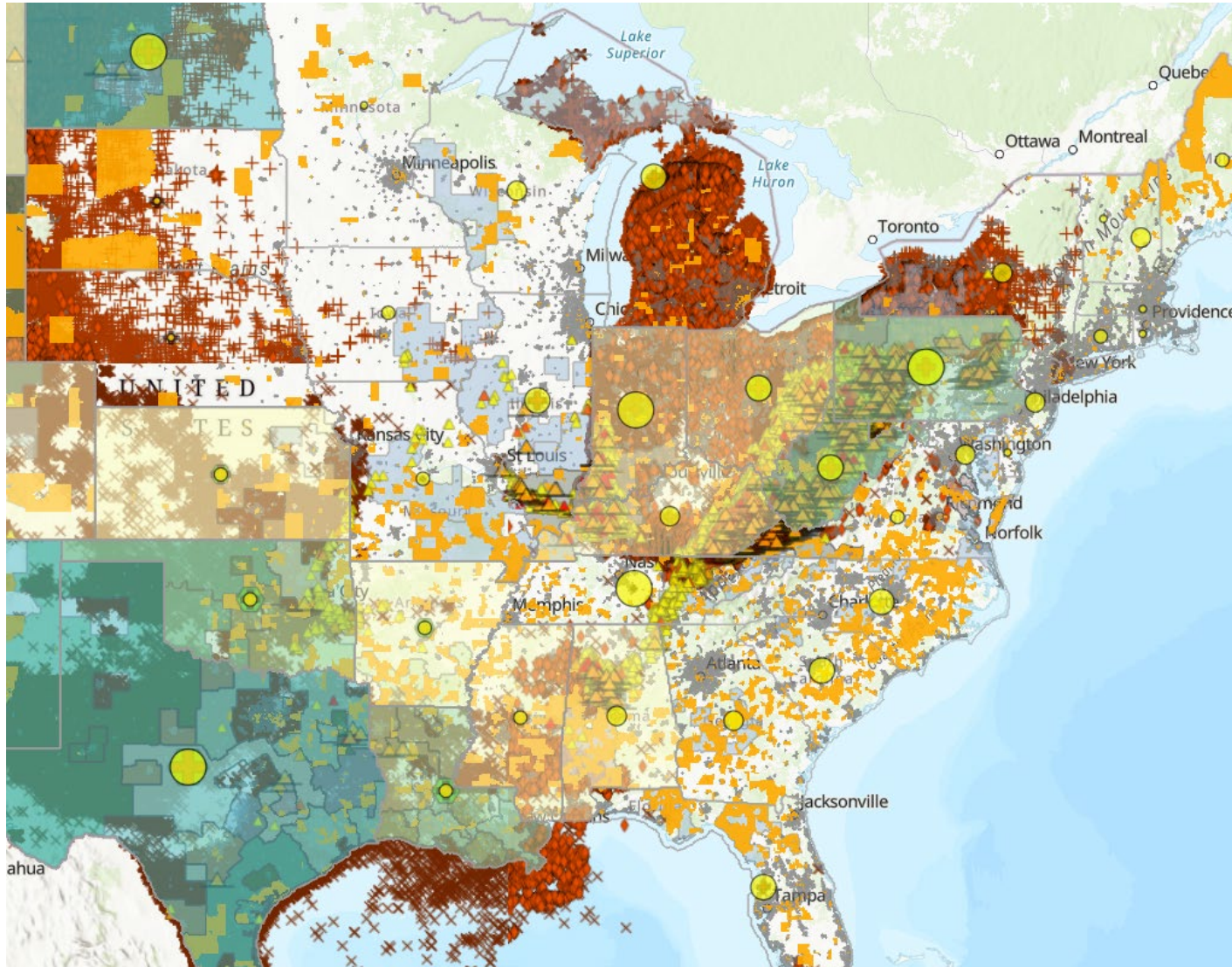
Energy Communities Directly Impacted by Coal Closures



Interagency Working Group (IWG) on Coal & Power Plant Communities and Economic Revitalization



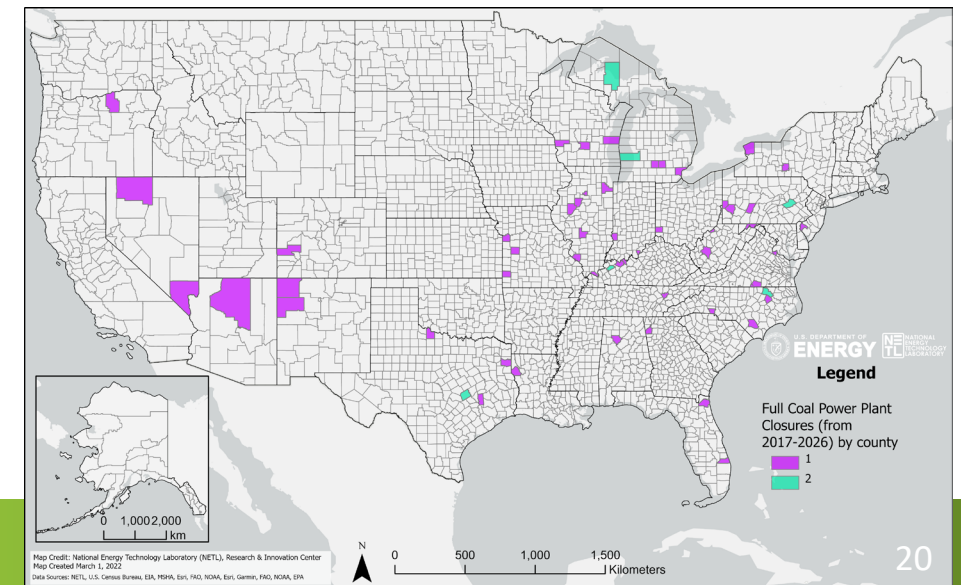
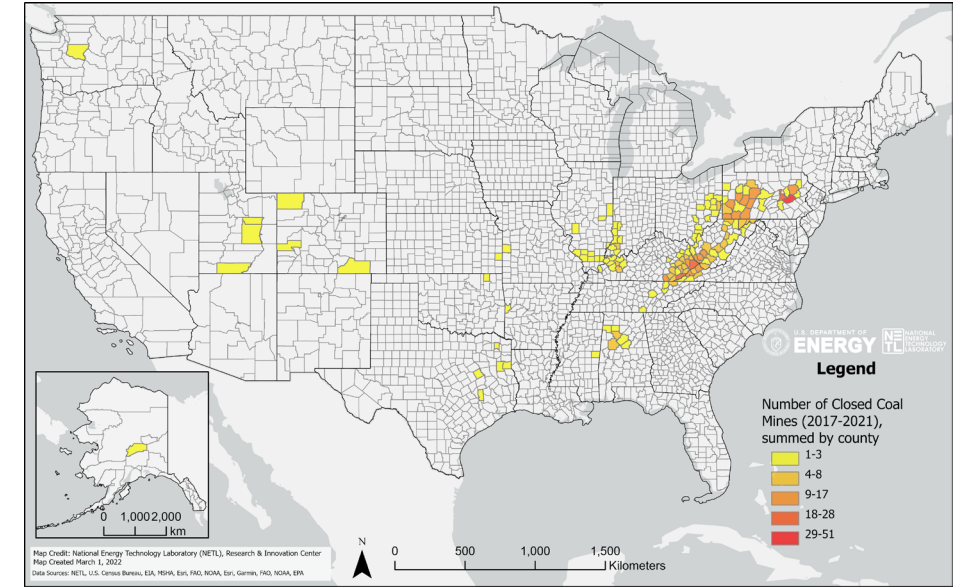
Increasing Complexity & Demand for EESJ Data



- Depending on the project, the **number of data variables & complexity of relationships** can be ridiculously overwhelming and challenging for stakeholders to effectively interpret and use
- Leveraging integrated analytics, as well as **ML & AI tools** can help simplify the data...
- But must be done smartly to reduce (or at least better characterize) underlying uncertainty and bias in these integrated analyses

Under development: Energy Transitions Atlas

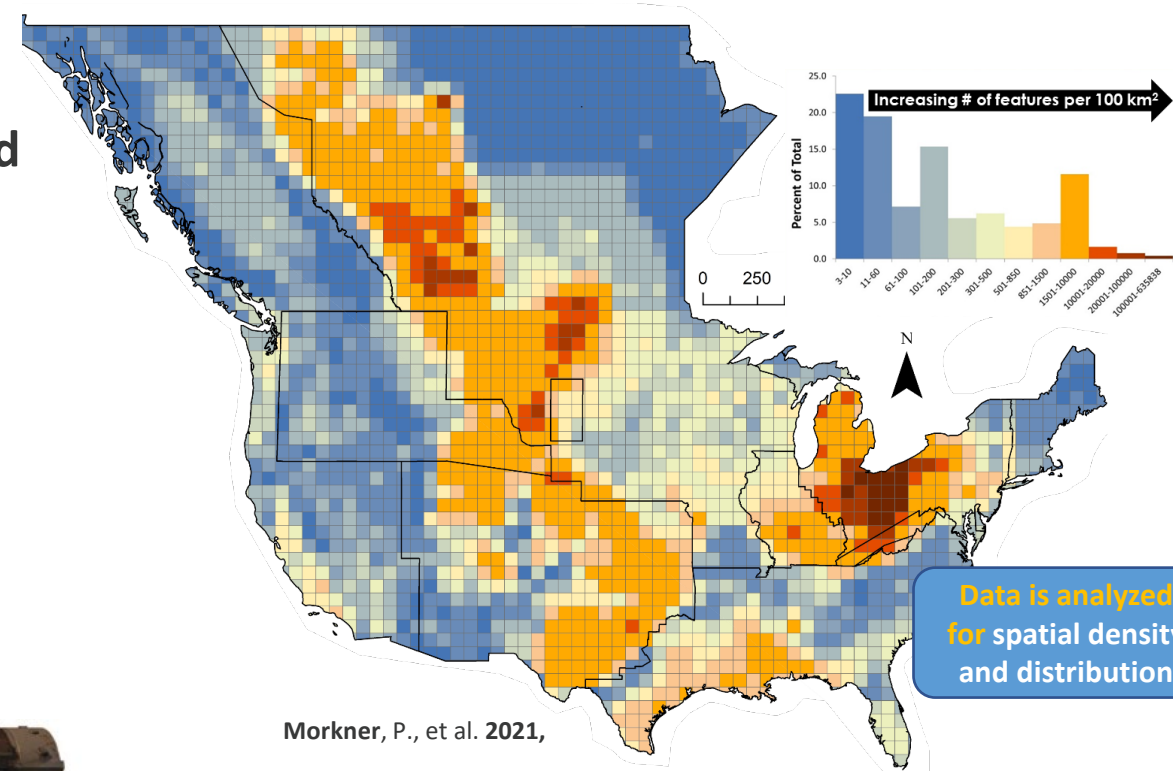
- Integrate data on Communities & Energy Transitions
 - Begin analytics with Coal data, at a county scale:
 - Coal Mine production & closures
 - Coal Power Generation retirements & planned retirements
 - Pull in additional community metrics, including:
 - Tax revenue from coal
 - Urban versus Rural
 - Poverty level
 - Average travel times to/from work
 - Percent of county households considered technology limited (based off broadband internet access)
 - Average level of education
 - **And more to come...**
- Introduce criteria & weights where needed to present critical information to stakeholders



FECM has Invested in Creating a Digital Infrastructure Resource-base

Need to advance for democratized Use

- **PB of carbon storage data preserved** using the **public and private** sides of EDX
- Curating access to **downloadable instances** of FECM Program datasets, **models & tools**
- **Developed custom, AI/ML/NLP enhanced tools** to drive FECM data discovery and knowledge extraction
- **Enabling** geospatial data and FECM web mapping for spatial data resources



*Current limitation of these data, tools, and capabilities...
...they still largely require the end-user to have access to the right expertise and computational resources to put them to use....*



Energy Data eXchange

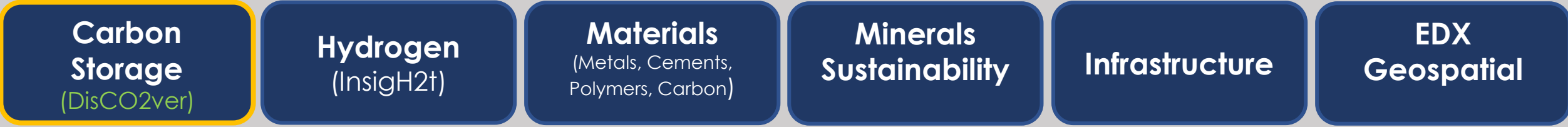
A Virtual Library and Laboratory Supporting FECM Research

Core Competencies of EDX

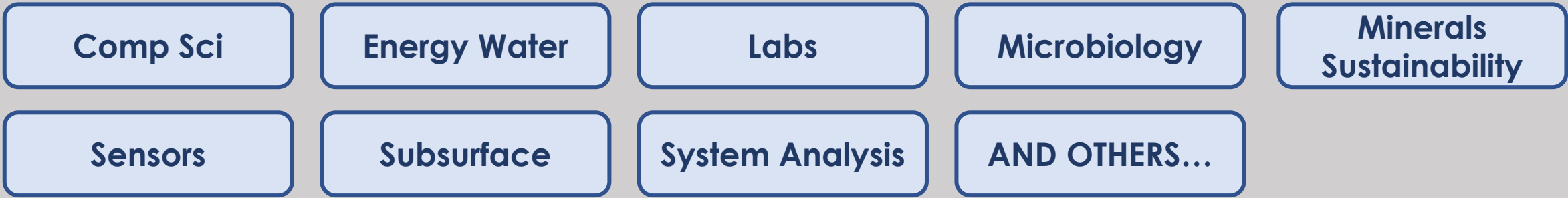


these 5 core competencies support

Core Projects/Programs



Ancillary Projects/Programs



EDX has fundamental capabilities that can be utilized across many research communities



ETA Via FECM's Flagship Data Infrastructure Platform



- EDX's geospatial resources are available via the GeoCube tool
- Spatial datasets, maps, and capabilities for visualization, exploration, web map development, and hosting of priority geospatial data collections

Search, Visualize, Download, Create

Search for Data

This is the platform for exploring and downloading GIS data, visualizing geospatial data, and building apps. You can analyze and combine datasets using maps, as well as develop new web and mobile applications.

Explore Data Collections

Click the icons to browse through specific data collections in NETL Portal.



Carbon Storage
Open Database



Global Oil and Gas Infrastructure



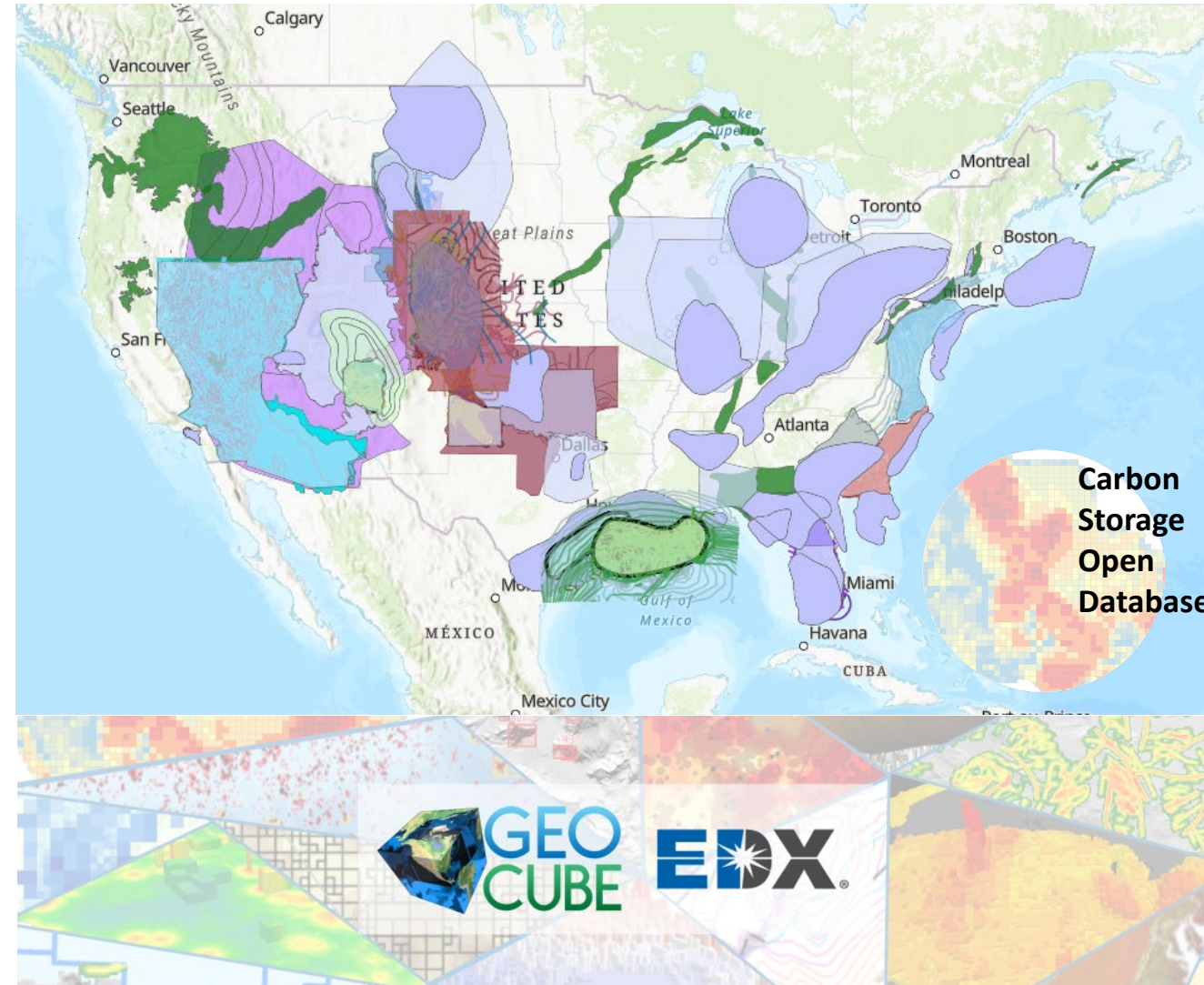
NATCARB Viewer 2.0



Offshore Gulf of Mexico

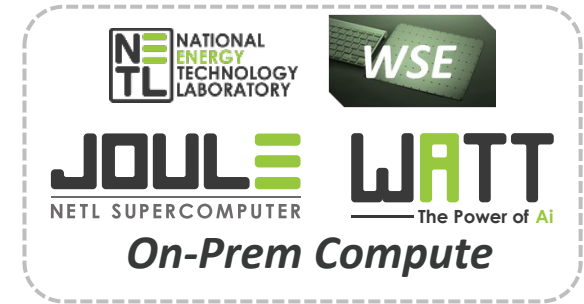
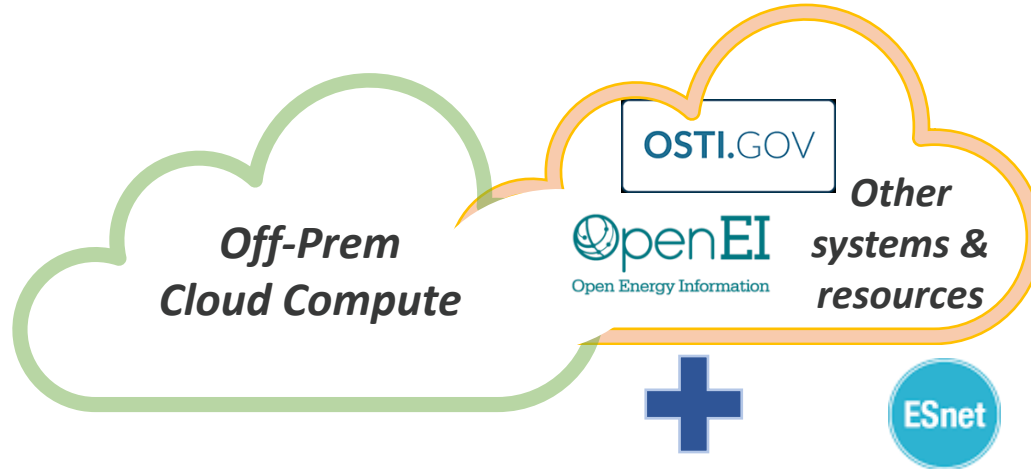
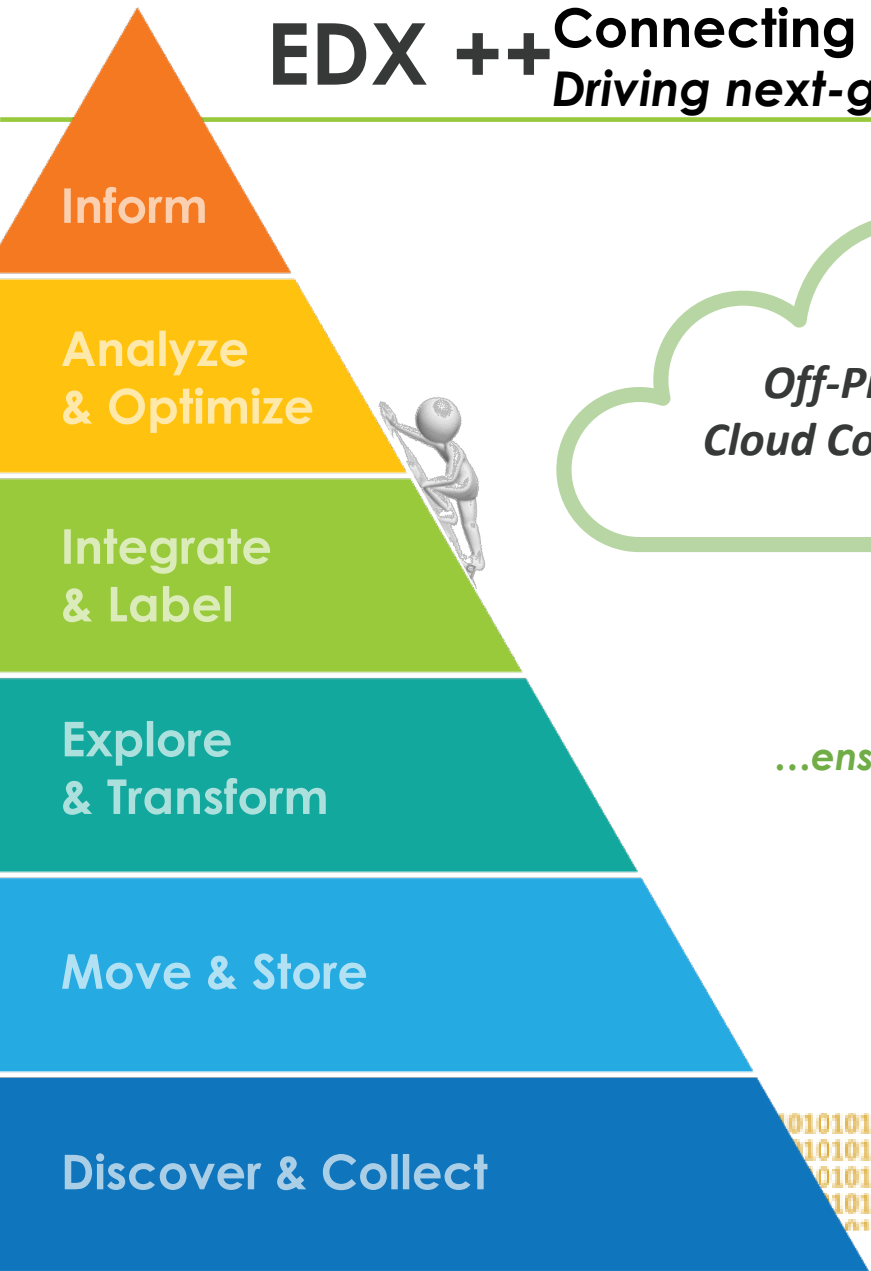


Rare Earth Elements
& Coal Open
Database



EDX ++ Connecting data to resources for analysis & computing

Driving next-gen AI R&D...scaling the pyramid



EDX++ FRAMEWORK

...ensuring compliance with Federal/DOE regulations



...ensuring preservation and access to DOE FECM knowledge and data resources



Big Data

Accelerating Commercialization and Reducing Risk



Collaborative Initiatives, Addressing National and DOE Priorities

Data Access, Collaboration & Management

Resource Assessments & Subsurface Characterization

Hazard, Risk and Impact Assessment

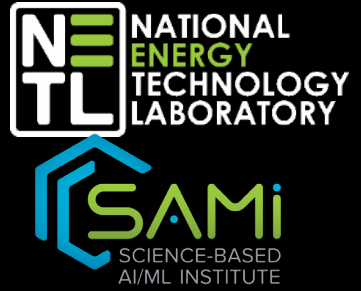
Planning & Evaluation

>35 award-winning tools, models and geo-datasets published to date, more coming



Data science takes a team....

Kelly Rose, kelly.rose@netl.doe.gov
& the GAIA R&D Group,
EDX Dev/Ops, & SAMI



Photo, part of the GAIA R&D team "B.C."



Citations



- Baker, D.V., Rose, K., Bauer, J., and Rager, D., 2016, **Computational Advances and Data Analytics to Reduce Subsurface Uncertainty**, ARMA 16-493, June 26-29, 2016, 16 pgs.
- Bauer, J., Justman, D., Mark-Moser, M., Romeo, L., Creason, C.G., and Rose, K., **Exploring beneath the basemap**, in Wright, D.J. and Harder, C. (Ed.), GIS for Science: Applying Mapping and Spatial Analytics: Volume 2, Redlands, CA: Esri Press, pp. 51-67, 2020, plus supplemental material.
- Dyer, et al., 2022, **Applied machine learning model comparison: Predicting offshore platform integrity with gradient boosting algorithms and neural networks**, <https://doi.org/10.1016/j.marstruc.2021.103152>
- Glosser, D., Rose, K., and J. R. Bauer, 2016. **Spatio-Temporal Analysis to Constrain Uncertainty in Wellbore Datasets: An Adaptable Analytical Approach in Support of Science-Based Decision Making**. Journal of Sustainable Energy Engineering, 3(4): 299-317. Justman, et al. (2022). A database and framework for carbon ore resources and associated supply chain data. Data in Brief. <https://doi.org/10.1016/j.dib.2021.107761>
- Justman, D., Creason, C.G., Rose, K., & Bauer, J., 2020. A knowledge-data framework and **geospatial fuzzy logic-based approach to model and predict structural complexity**. Journal of Structural Geology, 104153. <https://doi.org/10.1016/j.jsg.2020.104153>
- Mark-Moser, M., Wingo, P., Duran, R., Dyer, A., Zaengle, D., Suhag, A., Hoover, B., Pantaleone, S., Shay, J., Bauer, J., and Rose, K. **2021. AI/ML integration for accelerated analysis and forecast of offshore hazards**. AGU Fall Meeting 2021, Dec. 13-17, New Orleans, LA/Virtual. [Session: EP027](#) - Proven AI/ML applications in the Earth Sciences
- Morkner, P., Bauer, J., Creason, C., Sabbatino, M., Wingo, P., Greenburg, R., Walker, S., Yeates, D., and Rose, K. **Distilling data to drive carbon storage insights**, Computers & Geosciences, Volume 158, 2021, <https://doi.org/10.1016/j.cageo.2021.104945>.
- Nelson, J.; Dyer, A.; Romeo, L.; Wenzlick, M.; Zaengle, D.; Duran, R.; Sabbatino, M.; Wingo, P.; Barkhurst, A.; Rose, K.; Bauer, J. **Evaluating Offshore Infrastructure Integrity**; DOE/NETL-2021/2643; NETL Technical Report Series; U.S. Department of Energy, National Energy Technology Laboratory: Albany, OR, 2020; p 70. doi.org/10.2172/1780656
- Nelson, J. R., Romeo, L., & Duran, R. (2021). Exploring the **Spatial Variations of Stressors Impacting Platform Removal** in the Northern Gulf of Mexico. Journal of Marine Science and Engineering, 9(11), 1223.
- Rose, K.; Bauer, J.; Baker, V.; et al., 2018, **Development of an Open Global Oil and Gas Infrastructure Inventory and Geodatabase**; NETL-TRS-6-2018; NETL Technical Report Series; U.S. Department of Energy, National Energy Technology Laboratory: Albany, OR, 2018; p 594; DOI: 10.18141/1427573.
- Rose, K., 2016, **Signatures in the Subsurface – Big & Small Data Approaches for the Spatio-Temporal Analysis of Geologic Properties & Uncertainty Reduction**, 162 pgs, <http://hdl.handle.net/1957/59459>
- Rose, K., Bauer, J.R., and Mark-Moser, M., 2020, **A systematic, science-driven approach for predicting subsurface properties**, *Interpretation*, 8:1, 167-181 <https://doi.org/10.1190/INT-2019-0019.1>
- Wenzlick M., et al (2021) **Incorporating Historical Data and Past Analyses for Improved Tensile Property Prediction of 9% Cr**.
- Wenzlick, M., et al. 2021. **Data science techniques, assumptions, and challenges in alloy clustering and property prediction**. Journal of Materials Engineering and Performance.

Disclaimer: This project was funded by the Department of Energy, National Energy Technology Laboratory, an agency of the United States Government. Neither the United States Government nor any agency thereof, nor any of their employees nor any of their employees, makes any warranty, expressed or implied, or assumes any legal liability or responsibility for the accuracy, completeness, or usefulness of any information, apparatus, product, or process disclosed, or represents that its use would not infringe privately owned rights. Reference herein to any specific commercial product, process, or service by trade name, trademark, manufacturer, or otherwise, does not necessarily constitute or imply its endorsement, recommendation, or favoring by the United States Government or any agency thereof. The views and opinions of authors expressed herein do not necessarily state or reflect those of the United States Government or any agency thereof.

