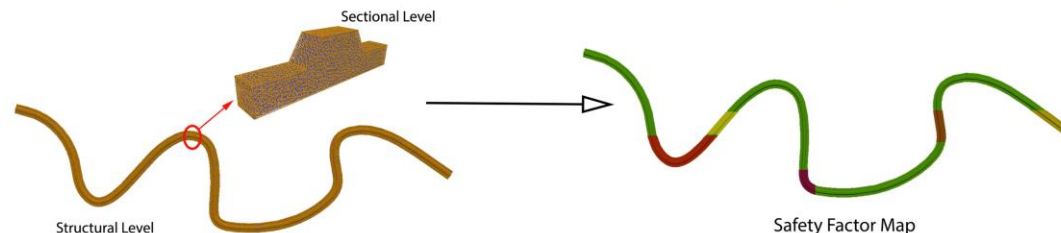
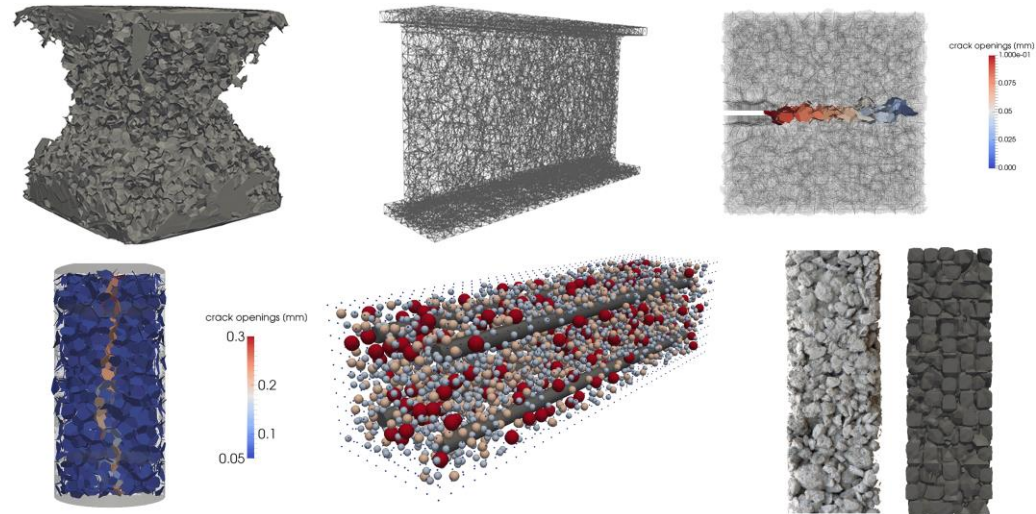
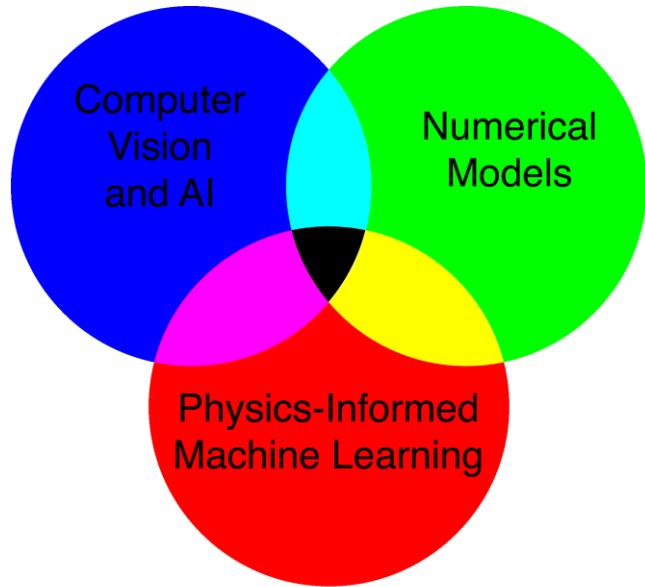





DISCOVER Lab
Digital-Twin Infrastructure Science for Operations and Visualization in Engineering Resilience

Research and educational hub developing new generation of models and tools to perform Digital Twin Modeling of the built environment, with the goal of providing science-based methodologies for resilience assessment of large-scale structural systems.



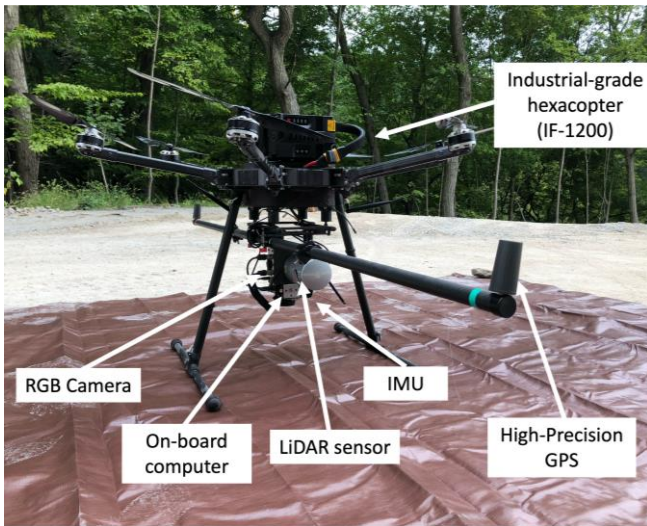
We perform research at the intersection of Multiscale Computational Mechanics, Mechanistic Machine Learning, Reality Capture and Computer Vision

Research and educational hub developing new generation of models and tools to perform Digital Twin Modeling of the built environment, with the goal of providing science-based methodologies for resilience assessment of large-scale structural systems.



DISCOVER Lab

Digital-Twin Infrastructure Science for Operations and Visualization in Engineering Resilience



Reality Capture (LiDAR+RGB Scanning)



Immersive Extended Reality Environment



Multi-User Holographic Rendering